



Q1 2026 EARNINGS SUMMARY

SEPTEMBER 23, 2025

Building Products | Consumer Products

A man with a beard, wearing a blue polo shirt, is shown from the chest up, working on a black and white outdoor shower head. He is holding the shower head with his left hand and using a black tool with an orange handle to adjust a part of it with his right hand. The background is a bright, out-of-focus outdoor setting.

Improving everyday life
by elevating spaces
and experiences.


Notes to Investors


FORWARD-LOOKING STATEMENTS. Selected statements in this presentation constitute “forward-looking statements,” as that term is used in the Private Securities Litigation Reform Act of 1995 (the “Act”). Worthington Enterprises, Inc. (the “Company” or “Worthington”) wishes to take advantage of the safe harbor provisions included in the Act. Forward-looking statements reflect the Company’s current expectations, estimates or projections concerning future results or events. These statements are often identified by the use of forward-looking words or phrases such as “believe,” “expect,” “anticipate,” “may,” “could,” “should,” “would,” “intend,” “plan,” “will,” “likely,” “estimate,” “project,” “position,” “strategy,” “target,” “aim,” “seek,” “foresee” and similar words or phrases. These forward-looking statements include, without limitation, statements relating to: expected cash positions, liquidity and ability to access financial markets and capital; outlooks, strategies or business plans; anticipated benefits of the separation of the Company’s steel processing business (the “Separation”); expected financial and operational performance of, and future opportunities for, the Company following the Separation; the Company’s performance on a pro forma basis to illustrate the estimated effects of the Separation on historical periods; the tax treatment of the Separation transaction; expected performance, growth, demand, financial condition or other financial measures; pricing trends for raw materials and finished goods; additions to product lines and opportunities to participate in new markets; anticipated working capital needs, capital expenditures and asset sales; anticipated improvements and efficiencies in costs, operations, sales, inventory management, sourcing and the supply chain; the ability to make acquisitions, form joint ventures and consolidate operations and the projected timing, benefits and costs related thereto; expectations for the economy and markets; expectations for shareholder value; effects of the novel coronavirus (“COVID-19”) pandemic; and other non-historical matters. Because they are based on beliefs, estimates and assumptions, forward-looking statements are inherently subject to risks and uncertainties that could cause actual results to differ materially from those projected. Any number of factors could affect actual results, including, without limitation, those that follow: the uncertainty of obtaining regulatory approvals in connection with the Separation, including rulings from the Internal Revenue Service; the ability to successfully realize the anticipated benefits of the Separation; the impacts of the COVID-19 pandemic; the effect of conditions in national and worldwide financial markets, including inflation, increases in interest rates and economic recession, and with respect to the ability of financial institutions to provide capital; the impact of tariffs, the adoption of trade restrictions affecting the Company’s products or suppliers, a U.S. withdrawal from or significant renegotiation of trade agreements, the occurrence of trade wars, the closing of border crossings, and other changes in trade regulations or relationships; changing oil prices and/or supply; product demand and pricing; changes in product mix, product substitution and market acceptance of the Company’s products; volatility or fluctuations in the pricing, quality or availability of raw materials (particularly steel), supplies, transportation, utilities, labor and other items required by operations (especially in light of the COVID-19 pandemic and Russia’s invasion of Ukraine); effects of sourcing and supply chain constraints; the outcome of adverse claims experience with respect to workers’ compensation, product recalls or product liability, casualty events or other matters; effects of facility closures and the consolidation of operations; the effect of financial difficulties, consolidation and other changes within the steel, automotive, construction and other industries in which the Company participates; failure to maintain appropriate levels of inventories; financial difficulties (including bankruptcy filings) of original equipment manufacturers, end-users and customers, suppliers, joint venture partners and others with whom the Company does business; the ability to realize targeted expense reductions from headcount reductions, facility closures and other cost reduction efforts; the ability to realize cost savings and operational, sales and sourcing improvements and efficiencies, and other expected benefits from transformation initiatives, on a timely basis; the overall success of, and the ability to integrate, newly-acquired businesses and joint ventures, maintain and develop their customers, and achieve synergies and other expected benefits and cost savings therefrom; capacity levels and efficiencies, within facilities, within major product markets and within the industries in which the Company participates as a whole; the effect of disruption in the business of suppliers, customers, facilities and shipping operations due to adverse weather, casualty events, equipment breakdowns, labor shortages, interruption in utility services, civil unrest, international conflicts (especially in light of Russia’s invasion of Ukraine), terrorist activities or other causes; changes in customer demand, inventories, spending patterns, product choices, and supplier choices; risks associated with doing business internationally, including economic, political and social instability (especially in light of Russia’s invasion of Ukraine), foreign currency exchange rate exposure and the acceptance of the Company’s products in global markets; the ability to improve and maintain processes and business practices to keep pace with the economic, competitive and technological environment; the effect of inflation, interest rate increases and economic recession, which may negatively impact the Company’s operations and financial results; deviation of actual results from estimates and/or assumptions used by the Company in the application of its significant accounting policies; the level of imports and import prices in the Company’s markets; the impact of environmental laws and regulations or the actions of the U.S. Environmental Protection Agency or similar regulators which increase costs or limit the Company’s ability to use or sell certain products; the impact of increasing environmental, greenhouse gas emission and sustainability regulations or considerations; the impact of judicial rulings and governmental regulations, both in the U.S. and abroad, including those adopted by the U.S. Securities and Exchange Commission (“SEC”) and other governmental agencies as contemplated by the Coronavirus Aid, Relief and Economic Security (CARES) Act, the Consolidated Appropriations Act, 2021, the American Rescue Plan Act of 2021, and the Dodd-Frank Wall Street Reform and Consumer Protection Act of 2010; the effect of healthcare laws in the U.S. and potential changes for such laws, especially in light of the COVID-19 pandemic, which may increase the Company’s healthcare and other costs and negatively impact the Company’s operations and financial results; the effect of tax laws in the U.S. and potential changes for such laws, which may increase the Company’s costs and negatively impact its operations and financial results; cyber security risks; the effects of privacy and information security laws and standards; and other risks described from time to time in the Company’s filings with the SEC, including those described in “Part I — Item 1A. — Risk Factors” of the Company’s Annual Report on Form 10-K for the fiscal year ended May 31, 2024, and its subsequent filings with the SEC. Forward-looking statements should be construed in the light of such risks. It is impossible to predict or identify all potential risk factors. Consequently, readers should not consider the foregoing list to be a complete set of all potential risks and uncertainties. Readers are cautioned not to place undue reliance on any forward-looking statements, which speak only as of the date made, which was September 23, 2025. The Company does not undertake, and hereby disclaims, any obligation to update any forward-looking statements, whether as a result of new information, future developments or otherwise, except as required by applicable law.



Q1 FY26 / Recent Highlights

- Consolidated net sales of \$304 million increased 18% year over year driven by higher volumes in Building Products and contributions from Elgen. Profitability improved with gross margin expanding to 27.1% from 24.3% and Adj. EBITDA margin rising to 21.4% from 18.8% in the prior year quarter

 **Building Products** Adj. EBITDA of \$58 million and Adj. EBITDA margin of 31.3% in Q1 improved from \$40 million and 28.4% in the prior year quarter

 **Consumer Products** Adj. EBITDA of \$16 million and Adj. EBITDA margin of 13.6% in Q1 decreased slightly from \$18 million and 15.1% in the prior year quarter

- Free cash flow¹ for Q1 was \$28 million with capex spend in Q1 of \$13 million, including \$9 million related to our facility modernization projects, which continue to weigh on near-term free cash flow
- Repurchased 100 thousand shares of common stock during Q1 for \$6 million, at an average purchase price of \$62.59 leaving 5.3 million shares remaining on the Company's share repurchase authorization at 08/31/25
- Declared \$0.19 per share dividend payable in December 2025
- Acquired Elgen Manufacturing, a market-leading designer and manufacturer of HVAC parts and components, for approximately \$91 million, net of cash acquired, on June 18, 2025



¹ Refer to appendix for reconciliation of non-GAAP measures to the comparable GAAP measure.

Q1 FY26 Highlights – Financial Summary

\$ Millions except EPS

	Q1 FY26	Q1 FY25
Worthington Enterprises Consolidated		
Net Sales	\$304	\$257
Adj. EBITDA	\$65	\$48
% Margin	21.4%	18.8%
Adj. EPS	\$0.74	\$0.50
Building Products Segment		
Net Sales	\$185	\$140
Adj. EBITDA	\$58	\$40
% Margin	31.3%	28.4%
Consumer Products Segment		
Net Sales	\$119	\$118
Adj. EBITDA	\$16	\$18
% Margin	13.6%	15.1%
Other		
Adj. EBITDA	(\$9)	(\$9)

Refer to appendix for reconciliation of Adjusted EBITDA to the comparable GAAP measure.

Q1 FY26 – Reconciliation of Adjusted Net Earnings

Worthington Enterprises Consolidated	Q1 FY26		Q1 FY25	
	\$ Millions after tax	Diluted EPS	\$ Millions after tax	Diluted EPS
Net Earnings (GAAP)	\$35	\$0.70	\$24	\$0.48
Restructuring and other expenses, net	\$2	\$0.04	\$1	\$0.02
Adj. Net Earning (Non-GAAP) ⁽¹⁾	\$37	\$0.74	\$25	\$0.50

 (1) Figures may not sum exactly due to rounding

Building Products At-a-Glance

Wholly-Owned

Heating and Cooking

Facilitating the transition away from fuel oil, as well as providing back-up power solutions.

Cooling and Construction

Integral in storing and transporting refrigerants while facilitating the transition to lower global-warming potential and ozone-depleting gases. Providing safe storage and transport of spray polyurethane foam insulation and roofing adhesive.

Water

Key component in providing safe and clean drinking water in homes and buildings.

Systems & Components

Key parts for HVAC structural framing, ductwork, and components primarily used in commercial buildings.

Ceiling Solutions

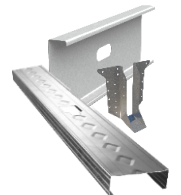


Solutions for ceilings, walls and partitions, suspended systems, and trim and transitions in numerous commercial, education, healthcare, retail and specialty environments, among others.

Metal Framing



Cold-formed steel framing and drywall/plastering finishing systems for interior and exterior applications, as well as clips, connectors, metal lath, welded wire, barrier mesh and accessories.



KEY FIGURES

(TTM AS OF Q1 FY26)

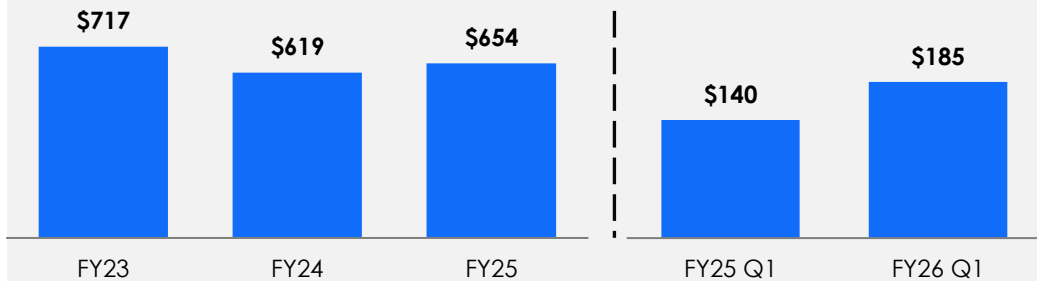
\$699M **33%** **\$229M**

NET SALES ADJ. EBITDA MARGIN ADJ. EBITDA

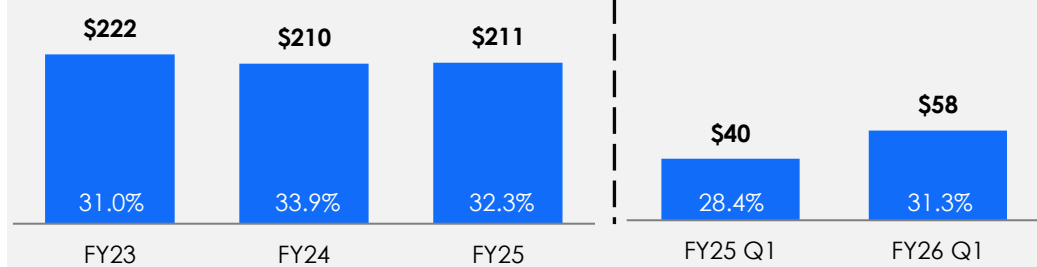
FINANCIAL METRICS

(\$ MILLIONS)

NET SALES



ADJ. EBITDA





W Note: TTM figures as of Q1 FY2026. Net Sales reflects wholly-owned businesses only, exclude JV's.

Building Products Joint Ventures

Market-leading businesses providing products critical to the building envelope


WAVE



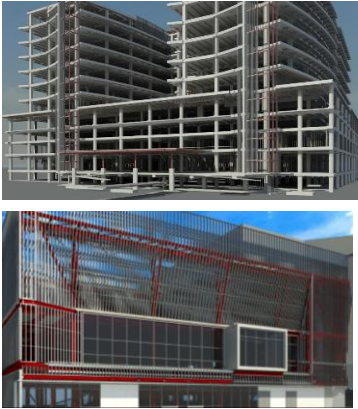
- 50/50 JV, established in 1992 with Armstrong World Industries
- North American market leader in ceiling suspension systems (grid) and integrated solutions
- Provides creative solutions to address customers need for speed and lower total cost
- Leverages the strengths and expertise of each parent company
- Over \$450 million of cash dividends paid to WOR in past five years since FY 2021



ClarkDietrich



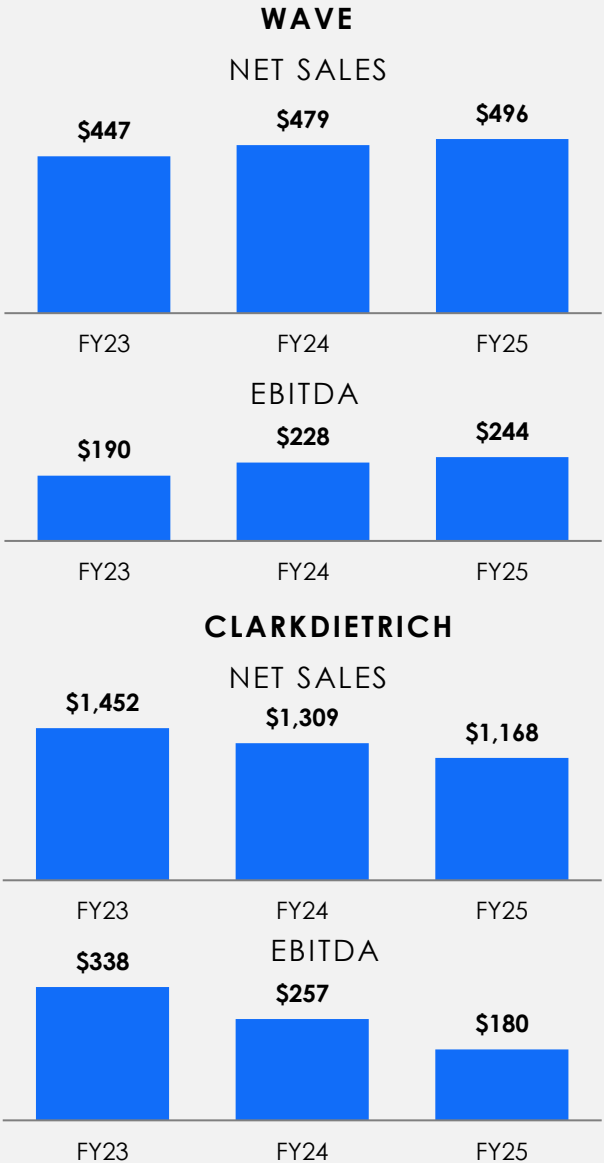
- 25% owned JV, established in 2011 through the combination of ClarkWestern Building Systems and Dietrich Metal Framing
- Market leading provider of building solutions for commercial steel framing distributors, contractors, owners & architects
- Offers broad product offering nationwide with speedy and reliable customer service
- Over \$250 million of cash dividends paid to WOR in past five years since FY 2021



Note: Financial metrics represent 100% of stand-alone JV results for WOR fiscal periods ending May 31st. Equity income contributed from WAVE and ClarkDietrich is included in Adj. EBITDA for the Building Products segment.

JV FINANCIAL METRICS

(\$ MILLIONS)



Consumer Products At-a-Glance

Tools



Hand-held torches, micro torches, lighters, accessories and fuel for constructing, fixing, making and creating.



Precision and specialty hand, digital and safety tools for tradesmen, craftsmen and DIYers.



LEVEL5

Drywall tools and accessories used for finishing and taping, skimming and masonry projects by professionals and DIYers.



Hand-held torches and micro torches used on the job and at home.



PACTOOL™

Cutting, siding and roofing tools utilized by tradespeople and DIYers for construction, remodeling and renovation projects.



Outdoor Living



Torches, fuel and accessories, including the first in-market digital fuel gauge, for outdoor adventures, backyard entertaining and yardwork.



Portable propane fuel cylinders for outdoor adventures.



Ergonomic multi-use garden tools including cultivators, weeders, edgers, pick-up and hand tools.



Pizza ovens, pellet grills, griddles and accessories for backyard cooking or outdoor experiences away from home.



Celebrations



Portable helium tanks and accessories for celebrations anytime and anywhere.



KEY FIGURES

(TTM AS OF Q1 FY26)

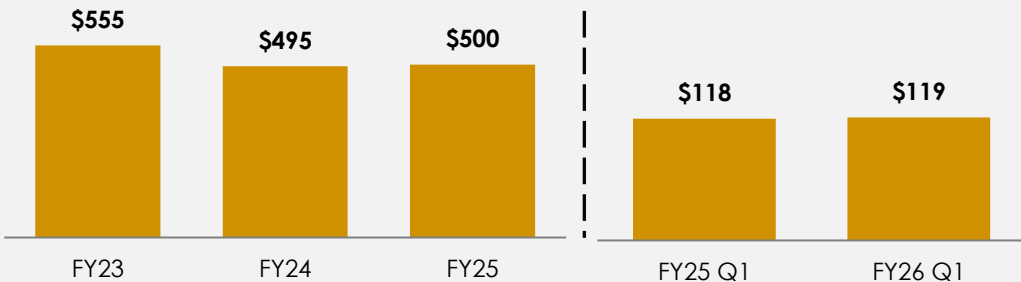
\$501M **16%** **\$81M**

NET SALES ADJ. EBITDA MARGIN ADJ. EBITDA

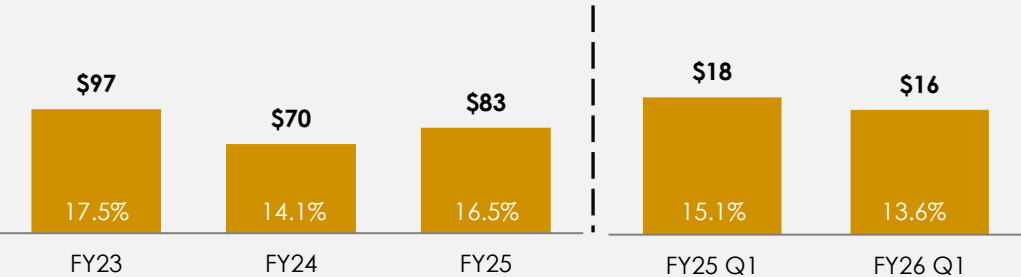
FINANCIAL METRICS

(\$ MILLIONS)

NET SALES



ADJ. EBITDA



Note: TTM figures as of Q1 FY2026.

Worthington Enterprises - A Compelling Financial Profile



Net Sales

\$1,200M

Adj. EBITDA¹

\$280M

Free Cash Flow¹

\$156M

**Net Working
Capital²**

\$313M

Net Debt

\$139M

**Adj. EBITDA
Margin**

23.3%

**Free Cash Flow
Conversion**

93.7%

Fixed Assets

\$287M

Note: TTM figures as of Q1 FY2026.

¹ Refer to appendix for reconciliation of non-GAAP measures to the comparable GAAP measure.

² Net Working Capital is defined as Accounts Receivable (\$214M) + Inventory (\$202M) – Accounts Payable (\$103M) as of 8/31/25.



Linde
AGA® smart cylinder

Established Portfolio of **Market-Leading** Brands

80%+ of Adjusted EBITDA comes from brands and products with leading market positions

Ceiling Suspension Systems	Metal Framing	Vertical Residential Heating Tanks	Well Water Tanks	Composite Heating & Cooking Tanks	Hand Torch And Fuels	Camping Fuel	Portable Helium Tanks
							
							

Note: FY2025 period. Based on management estimates.

...With a well-established strategic moat

STRONG CULTURE

Engaged employees who lead with safety, demonstrate a transformative mindset and maintain deep relationships with suppliers and customers.

MANUFACTURING OPERATIONS

Highly engineered, precise and compliant **metal manufacturing** with uncompromised safety and quality.

REGULATORY EXPERTISE

Deep **knowledge of regulations**, building codes, and highly specified applications and hazardous materials creates meaningful barriers to entry.



Strategic
Moat

PRODUCT INNOVATION

Established **processes** and **principles**.
Technology enabled beyond competition.

COMMERCIAL EXCELLENCE

Stickiness created from strong brands and market leadership, strategic relationships with retail/wholesale partners, providing valuable data analytics and price risk capabilities to **add value to our customers'** supply chains.

Serving Markets that are Well Positioned to Capitalize on Strong Secular Trends

U.S. INFRASTRUCTURE INVESTMENT



Ceiling Solutions



Metal Framing



Tools



HVAC Products

Multiple Federal funding bills support long-term construction and **supply chain investment**

HOUSING SUPPLY



Lawn & Garden



BBQ / Grill Products



Foam & Adhesive

Housing undersupply and population trends support increased need for **new and re-modeled homes**

RE-SHORING AND NEAR SHORING



Industrial Products



Metal Framing

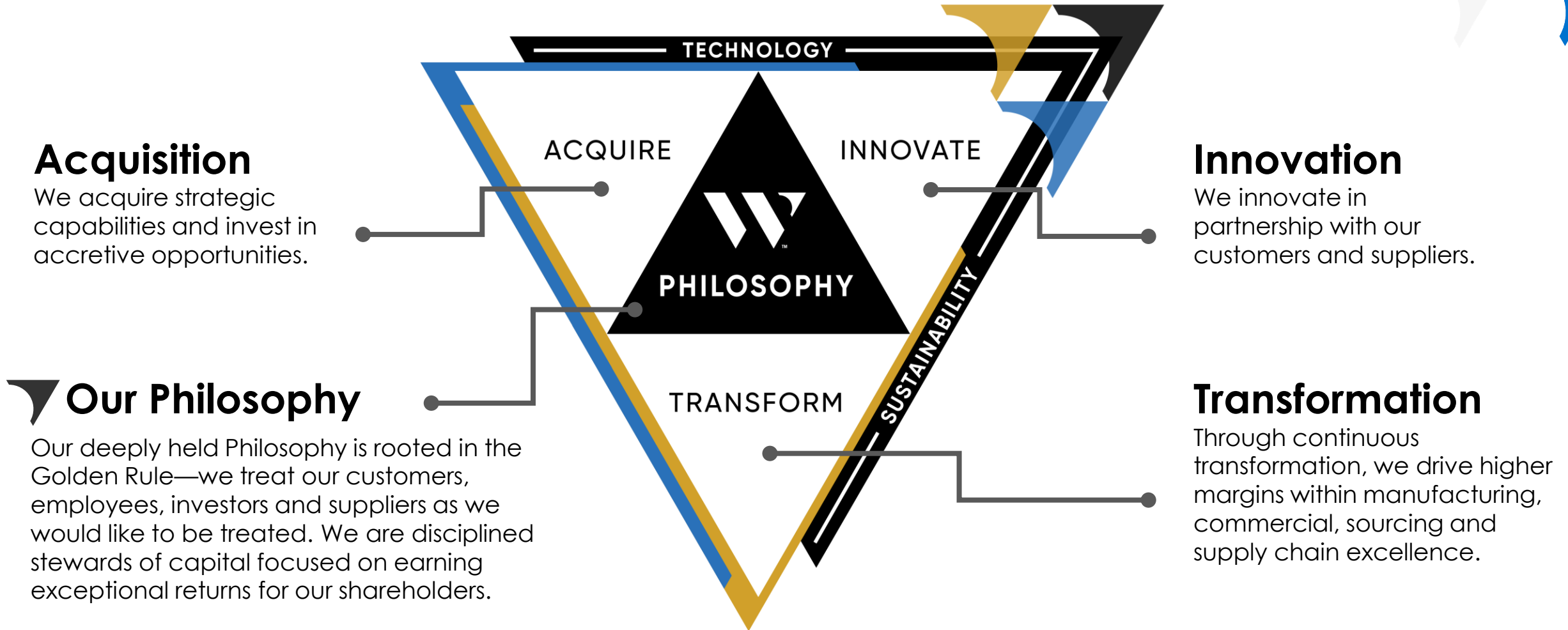


HVAC Products

Manufacturing investment in the U.S. in early stages of **multi-year resurgence**



Worthington Business System Accelerates Our Growth and Profitability



Delivering organic growth through innovation, new product development and strategic market share wins

INNOVATION & NEW PRODUCT DEVELOPMENT

SureSense™

SureSense – IoT-enabled propane level sensor designed to improve efficiency for propane marketers



POWER CORE

PowerCore cylinder – corrosion resistant spray cylinder for water-based adhesives



Balloon time

Balloon Time mini helium tank – compact product requiring less shelf-space and improving channel access



STRATEGIC SHARE WINS AND PRODUCT PLACEMENT

LEVEL5

Level5 Tools – gained placement for drywall tools at Sherwin-Williams and now available in 3,500 locations nationwide



HALO

Halo – extended placement of innovative Halo Griddle to select Walmart stores



Consumer and Building Products commercial teams worked closely together to expand relationship with **Tractor Supply** to gain share and expand offerings available.



Select recent examples of innovation, share and product placement wins

Acquisition Strategy Focused on Driving Profitable Growth

Targeted acquisition criteria:

- **Market-leading** positions in **niche markets**
- **High margin, high growth** brands or products
- **Asset-light** or low capital intensity business model
- Exposure to **channels** within building or consumer products
- **Additive capabilities** that enhance or expand our core competencies
- Demonstrated **sustainable competitive advantage**



RECENT ACQUISITIONS

2025



Building Products:

Leading designer and manufacturer of HVAC parts and components, ductwork and structural framing primarily used by contractors in commercial buildings

2024



Building Products:

Leading manufacturer of LPG composite cylinders



HALO

Consumer Products:

Innovative outdoor cooking equipment

2022



Consumer Products:

Leading provider of drywall tools, offering a complete lineup for finishing professionals and DIYers

Low Leverage, Ample Liquidity, and Solid Free Cash Flow Provides **Financial Flexibility**



Strong
Balance Sheet



Financial
Flexibility



Disciplined
Capital
Allocation

Leverage¹: **1.1x**
Total Debt / TTM Adj. EBITDA
Commitment to Maintaining
Investment Grade Rating

Ample Liquidity²: **\$667M**
TTM Free Cash Flow³: **\$156M**

Focused on growth and
rewarding shareholders

Note: TTM figures as of Q1 FY2026.

¹ \$306M of total debt and TTM Adjusted EBITDA from continuing operations of \$280M.

² Includes \$167M of cash and cash equivalents and \$500M of capacity from undrawn revolver as of 08/31/25.

³ Refer to appendix for reconciliation of Free Cash Flow to the comparable GAAP measure.



Disciplined Capital Allocation Strategy Focused on Growth and Rewarding Shareholders

Growth

Capital Expenditures

- Invest in facilities to maintain equipment and improve safety
- Strategic capex to drive further growth

Acquisitions

- Focus on market leading niche businesses in building and consumer products space
- High margin / high cash flow and lower capital intensity profile

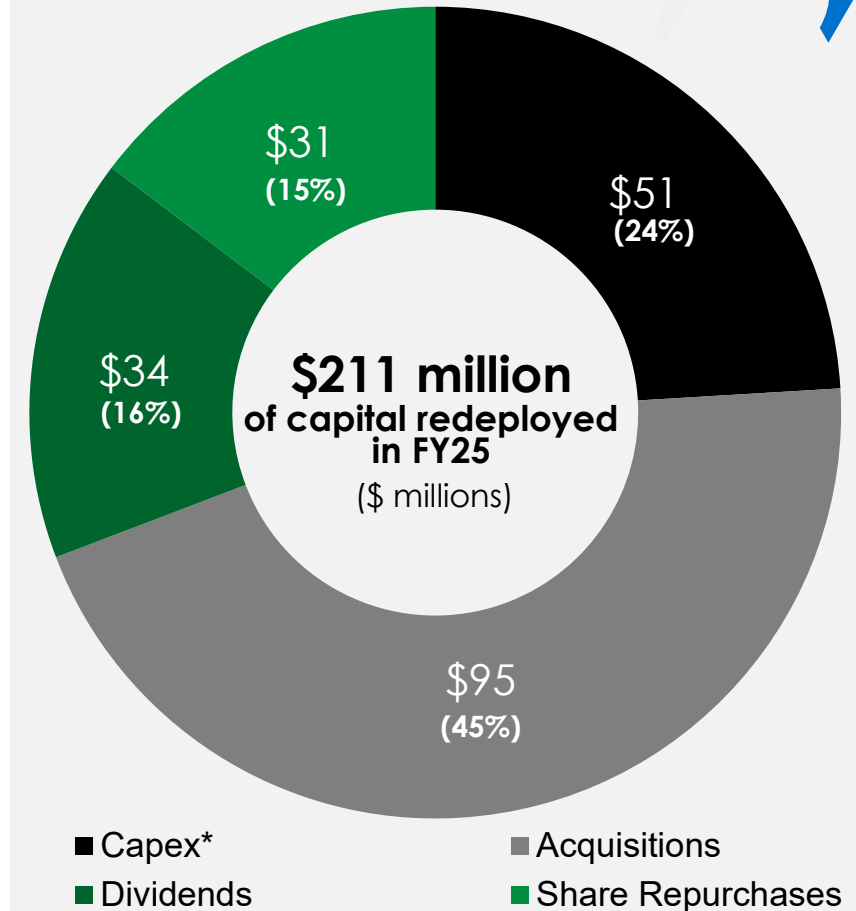
Rewarding Shareholders

Dividends

- Modest quarterly dividend - \$0.19 sh. quarterly
- Dividend paid quarterly since becoming a public company in 1968

Share Repurchases

- Opportunistic approach to share buybacks
- 5.3 million shares remaining on authorization



*FY25 Capex includes \$25 million related to the company's facility modernization projects

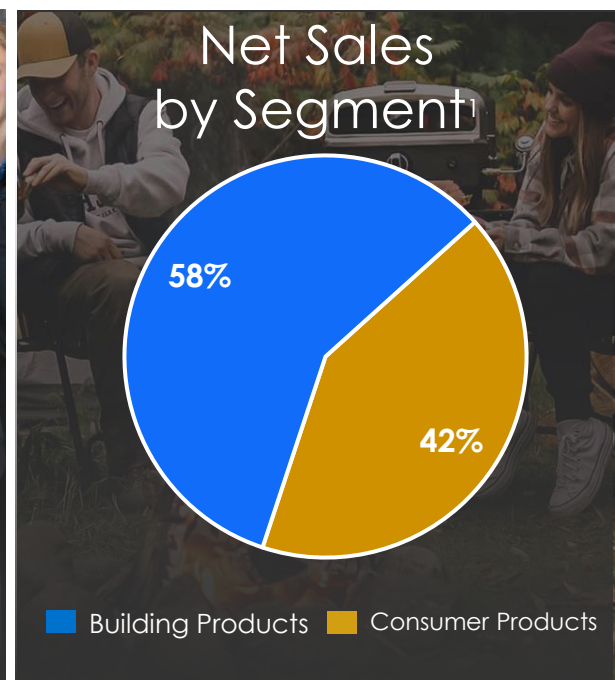


Key Investment Highlights

- Established Portfolio of **Market-Leading Brands** with **High Barriers to Entry**
- Strong Underlying Secular Trends Enabling **Steady Long-Term Growth**
- Business Model Drives **High Free Cash Flow** and **Returns**
- Worthington Business System **Accelerates Growth** and **Profitability**
- Innovation For Highly Engineered Products **Drives Incremental Sales** and **Margin**
- Guided by **Our Philosophy** – a People-First, Performance-Based Culture
- Low Leverage, Ample Liquidity, and Solid Free Cash Flow Provides **Financial Flexibility**

¹ TTM Figures as of Q1 FY2026 ended 8/31/25. Sales exclude pro-rata share of unconsolidated JV sales.

² Refer to appendix for reconciliation of Adjusted EBITDA from continuing operations to the comparable GAAP measure.



W | Corporate Citizenship & Sustainability

FY25 Highlights

PEOPLE

Outperforming safety total case incident rate (TCIR)

↓ 40%

LOWER THAN
INDUSTRY AVERAGE

Fostering an engaged and inclusive workforce

85%

PARTICIPATION IN EMPLOYEE
ENGAGEMENT SURVEY

Supporting communities

\$3.1M

DONATED TO NON-PROFIT ORGANIZATIONS FROM
THE WORTHINGTON COMPANIES FOUNDATION

PARTNERS

Sourcing domestically

86%

PROCUREMENT WITH
LOCAL U.S. SUPPLIERS

Engaging suppliers

100%

OF SUPPLIERS INDIRECTLY
MONITORED AND 75% OF
OUR SUPPLIER SPEND
DIRECTLY ENGAGED

PROCESS & PLANET

Reducing our environmental footprint

88%

TOTAL WASTE RECYCLED
OR RECOVERED

Introducing corporate recycling and organics diversion programs



Building climate resilience

\$6.05M

AVOIDED COSTS THROUGH RISK REDUCTION
ACTIONS OVER THE LAST 3 YEARS

PRODUCTS

Increasing transparency



NEW ENVIRONMENTAL
PRODUCT DECLARATION FOR
RAGASCO PRODUCTS

Ensuring curbside recyclability

100%

TRANSITIONED GARDEN WEASEL
SHIPPING CARTON MATERIAL AND
CHANGED DESIGN, RESULTING IN
INCREASED UNITS PER PALLET

LEADING THE WAY

Workforce Development



LEARN AND LEAD

LEADERSHIP DEVELOPMENT PROGRAM



Appendix



Worthington Enterprises

Reconciliation of Non-GAAP Measures *(in millions)*

See next slide for detailed footnotes related to reconciliation of Non-GAAP measures

Net earnings from continuing operations (GAAP)

Plus: Net loss attributable to noncontrolling interest

Net earnings before income taxes attributable to controlling interest

Interest expense, net

Income tax expense

EBIT (subtotal) ⁽¹⁾

Corporate costs eliminated at Separation

Impairment of goodwill and long-lived assets ⁽²⁾

Restructuring and other expense, net ⁽²⁾

Separation costs

Non-cash charges in miscellaneous income ⁽³⁾

Loss on extinguishment of debt ⁽³⁾

Non-recurring (gain) loss in equity income ⁽⁴⁾

Adjusted EBIT (subtotal)

Depreciation and amortization ⁽⁵⁾

Stock-based compensation

Adjusted EBITDA - Continuing operations (non-GAAP)

Net earnings from continuing operations margin (GAAP)

Adjusted EBITDA from continuing operations margin (non-GAAP)

5/31/2024	5/31/2025	TTM	FY 2025	FY 2026
FY24	FY25	Q1 FY 2026	Q1	Q1
\$ 35.0	\$ 95.0	\$ 105.7	\$ 24.0	\$ 34.8
0.3	1.1	1.2	0.2	0.3
35.3	96.1	106.9	24.2	35.1
1.6	2.1	1.6	0.5	0.1
39.0	33.8	37.9	6.8	10.9
75.9	132.0	146.4	31.5	46.1
19.3	-	-	-	-
33.0	50.8	50.8	-	-
29.3	10.5	11.9	1.2	2.5
12.7	-	-	-	-
19.2	5.0	5.0	-	-
1.5	-	-	-	-
(1.8)	3.4	3.4	-	-
189.1	201.7	217.5	32.7	48.6
48.7	48.3	49.6	11.8	13.1
13.2	13.5	13.0	3.9	3.4
\$ 251.0	\$ 263.5	\$ 280.1	\$ 48.4	\$ 65.1
2.8%	8.2%	8.8%	9.3%	11.5%
20.1%	22.8%	23.3%	18.8%	21.4%



Worthington Enterprises

Reconciliation of Non-GAAP Measures *(in millions)*

Non-GAAP Footnotes

(1) EBIT and adjusted EBIT are non-GAAP financial measures. However, these measures are not used by management to evaluate the Company's performance, engage in financial and operational planning, or to determine incentive compensation. Instead, they are included as subtotals in the reconciliation of earnings before income taxes from continuing operations to adjusted EBITDA from continuing operations, which is a non-GAAP financial measure used by management.

(2) Significant pre-tax impairment and restructuring charges include the following:

- *Impairment of goodwill and long-lived assets:* Non-cash charges of \$50.1 million in the fourth quarter of fiscal 2025 related to the write-down of intangible assets associated with GTI and \$32.2 million in the fourth quarter of fiscal 2024 due to the deconsolidation of our former Sustainable Energy Solutions operating segment.
- *Restructuring and other expense, net:* A charge of \$4.5 million in fiscal 2025 related to an increase in the fair value of the contingent liability associated with the Ragasco earnout arrangement and a loss of \$30.5 million in the fourth quarter of fiscal 2024 due to the deconsolidation of our former Sustainable Energy Solutions operating segment during the fourth quarter of fiscal 2024.

(3) Reflects the following non-cash charges in miscellaneous expense:

- Pre-tax charges of \$5.0 million and \$11.1 million during the fourth quarter of fiscal 2025 and fiscal 2024, respectively, to write down an investment that was determined to be other than temporarily impaired.
- A pre-tax charge of \$8.0 million during the fourth quarter of fiscal 2024 related to the completion of a pension lift-out transaction.

(4) Includes the following activity within equity income:

- A non-cash impairment charge of \$3.4 million at the SES joint venture during the fourth quarter of fiscal 2025.
- A net gain of \$2.8 million associated with the divestiture of the Brazilian operations of Taxi Workhorse Holdings, LLC during the fourth quarter of fiscal 2024 and the settlement of certain participant balances within the pension plan maintained by WAVE.

(5) Excludes \$2.7 million of stock-based compensation reported in restructuring and other expense, net in the Company's consolidated statement of earnings during fiscal 2025 related to the accelerated vesting of certain outstanding equity awards upon retirement of our former CEO effective November 1, 2024.



Worthington Enterprises

Reconciliation of Non-GAAP Measures *(in millions)*



Consolidated Results – Free Cash Flow

	Fiscal Year 2025	TTM Q1 FY26	FY25 Q1	FY26 Q1
Net cash provided by operating activities (GAAP)	\$ 209.7	\$ 209.7	\$ 41.1	\$ 41.1
Investment in property, plant, and equipment	(50.6)	(54.1)	(9.6)	(13.2)
Free cash flow (non-GAAP)	\$ 159.1	\$ 155.6	\$ 31.5	\$ 27.9
Net earnings attributable to controlling interest (GAAP)	\$ 96.1	\$ 106.9	\$ 24.3	\$ 35.1
Adjusted net earnings attributable to controlling interest (non-GAAP)	\$ 153.8	\$ 165.9	\$ 25.1	\$ 37.2
Operating cash flow conversion (GAAP) ⁽¹⁾	218%	196%	169%	117%
Free cash flow conversion (non-GAAP)	103%	94%	125%	75%

(1) Operating cash flow conversion is defined as net cash provided by operating activities divided by net earnings from continuing operations attributable to controlling interest.



Worthington Enterprises

Reconciliation of Non-GAAP Measures *(in millions)*



Joint Venture Results - EBITDA

WAVE

	Fiscal Year		
	FY23	FY24	FY25
Net earnings (GAAP)	\$ 171.7	\$ 206.0	\$ 221.5
Interest expense, net	13.0	17.3	16.8
Income tax expense	0.2	0.3	0.3
EBIT (subtotal)	184.9	223.5	238.6
Depreciation and amortization	4.7	4.9	5.4
EBITDA (non-GAAP)	<u>\$ 189.6</u>	<u>\$ 228.5</u>	<u>\$ 244.1</u>

ClarkDietrich

	Fiscal Year		
	FY23	FY24	FY25
Net earnings (GAAP)	\$ 322.0	\$ 239.3	\$ 163.2
Interest expense, net	0.5	0.2	0.1
Income tax expense	1.9	2.2	1.3
EBIT (subtotal)	324.4	241.7	164.5
Depreciation and amortization	13.7	15.1	16.0
EBITDA (non-GAAP)	<u>\$ 338.1</u>	<u>\$ 256.8</u>	<u>\$ 180.5</u>



Use of Non-GAAP Measures and Definitions

NON-GAAP FINANCIAL MEASURES. These materials include certain financial measures that are not calculated and presented in accordance with accounting principles generally accepted in the United States ("GAAP"). Non-GAAP financial measures typically exclude items that management believes are not reflective of, and thus should not be included when evaluating the performance of the Company's ongoing operations. Management uses these non-GAAP financial measures to evaluate ongoing performance, engage in financial and operational planning, and determine incentive compensation. Management believes these non-GAAP financial measures provide useful supplemental information regarding the performance of the Company's ongoing operations and should not be considered as an alternative to the comparable GAAP financial measure. Additionally, management believes these non-GAAP financial measures allow for meaningful comparisons and analysis of trends in the Company's businesses and enables investors to evaluate operations and future prospects in the same manner as management. All non-GAAP financial measures presented herein are reported on a continuing operations basis.

The following provides an explanation of each non-GAAP financial measure presented in these materials:

Adjusted operating income is defined as operating income (loss) excluding the items listed below, to the extent naturally included in operating income (loss).

Adjusted net earnings is defined as net earnings attributable to controlling interest excluding the after-tax effect of the excluded items outlined below.

Adjusted diluted EPS is defined as adjusted net earnings divided by diluted weighted-average shares outstanding for the applicable period.

Adjusted earnings per diluted share ("Adjusted EPS") is defined as adjusted net earnings divided by diluted weighted-average shares outstanding.

Adjusted EBITDA is the measure by which management evaluates segment performance and overall profitability. EBITDA is defined as earnings before interest, taxes, depreciation, and amortization. Adjusted EBITDA excludes additional items including, but not limited to, those listed below, as well as other items that management believes are not reflective of, and thus should not be included when evaluating the performance of ongoing operations. Adjusted EBITDA also excludes stock-based compensation due to its non-cash nature, which is consistent with how management assesses operating performance and determines incentive compensation. At the segment level, adjusted EBITDA includes expense allocations for centralized corporate back-office functions that exist to support the day-to-day business operations. Public company and other governance costs are held at the corporate level within the unallocated corporate and other category.

Adjusted EBITDA margin is calculated by dividing adjusted EBITDA by net sales.

Free cash flow is a non-GAAP financial liquidity measure that is used by the Company to assess its ability to generate cash beyond what is required for its business operations and capital expenditures. The Company defines free cash flow as net cash flows from operating activities less investment in property, plant, and equipment.

Free cash flow conversion is a non-GAAP financial measure that is used by the Company to measure how much of its adjusted net earnings attributable to controlling interest is converted into cash. The company defines free cash flow conversion as free cash flow divided by net earnings.



Use of Non-GAAP Measures and Definitions (Continued)

EXCLUSIONS FROM NON-GAAP FINANCIAL MEASURES

Management believes it is useful to exclude the following items from its non-GAAP financial measures for its own and investors' assessment of the business for the reasons identified below. Additionally, management may exclude other items from non-GAAP financial measures that do not occur in the ordinary course of the Company's ongoing business operations and note them in the reconciliation from net earnings from continuing operations to the non-GAAP financial measure adjusted EBITDA from continuing operations.

- *Impairment charges* are excluded because they do not occur in the ordinary course of the Company's ongoing business operations, are inherently unpredictable in timing and amount, and are non-cash, which management believes facilitates the comparison of historical, current and forecasted financial results.
- *Restructuring activities* consists of established programs that are intended to fundamentally change the Company's operations, and as such are excluded from its non-GAAP financial measures. The Company's restructuring programs may include closing or consolidating production facilities or moving manufacturing of a product to another location, realignment of the management structure of a business unit in response to changing market conditions or general rationalization of headcount. The Company's restructuring activities generally give rise to employee-related costs, such as severance pay, and facility-related costs, such as exit costs and gains or losses on asset disposals but may include other incremental costs associated with the Company's restructuring activities. Restructuring and other expense, net, may also include other nonrecurring items included in operating income but incremental to the Company's normal business activities. These items are excluded because they are not part of the ongoing operations of the Company's underlying business.
- *Separation costs*, which consist of direct and incremental costs incurred in connection with the completed Separation are excluded as they are one-time in nature and are not expected to occur in periods following the Separation. These costs include fees paid to third-party advisors, such as investment banking, audit and other advisory services as well as direct and incremental costs associated with the Separation of shared corporate functions. Results in fiscal 2024 also include incremental compensation expense associated with the modification of unvested short and long-term incentive compensation awards, as required under the employee matters agreement executed in conjunction with the Separation.
- *Non-cash charges in miscellaneous expense* are excluded due to their non-cash nature and the fact that they do not occur in the normal course of business and may obscure analysis of trends and financial performance.
- *Loss on extinguishment of debt* is excluded because it does not occur in the normal course of business and may obscure analysis of trends and financial performance. Additionally, the amount and frequency of this type of charge is not consistent and is significantly impacted by the timing and size of debt extinguishment transactions.
- *Corporate costs eliminated at Separation* reflect certain corporate overhead costs that no longer exist post-Separation. These costs were included in continuing operations as they represent general corporate overhead that was historically allocated to the Company's former steel processing business but did not meet the requirements to be presented as discontinued operations.
- *Pension settlement charges* are excluded due to their non-cash nature and the fact that they do not occur in the normal course of business and may obscure analysis of trends and financial performance. These transactions typically result from the transfer of all or a portion of the total projected benefit obligation to third-party insurance companies.
- *One-time tax effects* of Separation are charges to income tax expense primarily related to non-deductible transaction costs. They are excluded because they are one-time in nature and not expected to occur in periods following the Separation.
- *Non-recurring loss in equity income* is excluded because it does not occur in the normal course of business and is inherently unpredictable in timing and amount.

