



TSX: WDO | OTCQX: WDOFF

EXPLORATION
TEACH-IN

MARCH 30, 2026



Forward-Looking Statements

Forward-Looking Statements

This presentation contains “forward-looking information” which involve a number of risks and uncertainties. Often, but not always, forward-looking statements can be identified by the use of words such as “plans”, “expects”, “is expected”, “budget”, “scheduled”, “estimates”, “forecasts”, “intends”, “anticipates”, or “believes” or variations (including negative variations) of such words and phrases, or state that certain actions, events or results “may”, “could”, “would”, “might” or “will” be taken, occur or be achieved. Forward-looking statements involve known and unknown risks, uncertainties and other factors which may cause the actual results, performance or achievements of the Company to be materially different from any future results, performance or achievements expressed or implied by the forward-looking statements. Forward-looking statements contained herein are made as of the date of this presentation and the Company disclaims any obligation to update any forward-looking statements, whether as a result of new information, future events or results or otherwise. There can be no assurance that forward-looking statements will prove to be accurate, as actual results and future events could differ materially from those anticipated in such statements.

Forward-looking statements or information contained in this presentation include, but are not limited to, statements or information with respect to: the targeted tonnes per day for each of Kiena and Eagle River, along with the associated breakdown; details of the planned 2026 drilling programs at Kiena and Eagle River; details and timelines relating to the Company’s exploration strategy; model updates providing the potential for new opportunities in Eagle River; new geological interpretation providing the potential for new opportunity in the Mishi-Magnacon corridor; multiple potential open pit opportunities offering long-term growth potential; the implication that Kiena will become another cornerstone asset for the Company; the largely unexplored land package at Kiena being potentially prolific; two major corridors at Kiena (the Northern and Southern corridors) hosting both high-grade and bulk-tonnage potential; the potential for high-grade opportunities across 5-kilometre mineralized trend at Kiena; three new high-grade lenses highlighting the potential of Kiena Deep; the presence of visible gold and multiple new lenses highlighting the B-Zone potential at Kiena; the projection of the North Zone in the VC Zone at Kiena; the potential for Dubuisson being a game changer given the grades and widths it has delivered to date; multiple opportunities across Kiena having the potential to develop bulk tonnage targets; the Company’s production guidance for 2026 and components of the illustrative 2027 production; and the potential for the Company to be a 400,000 – 500,000 gold producer.

Furthermore, should one or more of the risks, uncertainties or other factors materialize, or should underlying assumptions prove incorrect, actual results may vary materially from those described in forward-looking statements or information. These risks, uncertainties and other factors including those risk factors discussed in the sections titled “Cautionary Note Regarding Forward-Looking Information” and “Risks and Uncertainties” in the Company’s most recent Annual Information Form. Readers are urged to carefully review the detailed risk discussion in our most recent Annual Information Form which is available on SEDAR+ and on the Company’s website.

There can be no assurance that forward-looking statements or information will prove to be accurate, as actual results and future events could differ materially from those anticipated in such statements. The Company undertakes no obligation to update forward-looking statements if circumstances, management’s estimates or opinions should change, except as required by securities legislation. Accordingly, the reader is cautioned not to place undue reliance on forward-looking statements.

Non-IFRS Performance Measures

Certain non-IFRS financial measures and ratios are included in this presentation, including free cash flow, free cash flow margin, free cash flow yield, operating cash flow, liquidity, available credit, return on invested capital, and all-in sustaining costs.

Please see the Company’s MD&A for the three and twelve months ended December 31, 2025, for explanations, definitions and discussion of non-IFRS financial measures and ratios. The Company believes that these measures, in addition to conventional measures prepared in accordance with International Financial Reporting Standards (“IFRS”), provide investors an improved ability to evaluate the underlying performance of the Company. The non-IFRS and other financial measures and ratios are intended to provide additional information and should not be considered in isolation or as a substitute for measures or ratios of performance prepared in accordance with IFRS. These measures and ratios do not have any standardized meaning prescribed under IFRS and therefore may not be comparable to other issuers. For definitions and reconciliations of these non-IFRS measures, please refer to the last page of this presentation.

Currency

Unless otherwise disclosed, all references to “\$” are to Canadian dollars and all references to “US\$” are to United States dollars.

Certain Other Information

Any graphs, tables or other information demonstrating our historical performance, or any other entity contained in this presentation are intended only to illustrate past performance of such entities and are not necessarily indicative of our future performance or such entities.

Today's Speakers



ANTHEA BATH
President and
Chief Executive Officer

JONO LAWRENCE
Senior Vice President,
Exploration and Resources

Today's Agenda

- 1** Opening Remarks
- 2** Meet Our Exploration Team
- 3** Exploration Strategy
- 4** Eagle River Global Model
- 5** Eagle River Geology and Exploration
- 6** Kiena Geology and Exploration
- 7** Building a Mid-Tier Gold Producer



Opening Remarks





Meet Our Exploration Team



A Strong and Experienced Team



Jono Lawrence

Senior Vice President, Exploration and Resources

Joined Wesdome in January 2025

- 34 years of global exploration experience across Africa, Australia, Asia, and Central America, from early-stage exploration through resource definition.
- Former EVP, Exploration at Endeavour Mining (2016–2025), where he led major discovery and growth initiatives, including ~10Moz of exploration success at key assets such as Ity and Houndé.
- Prior senior roles include at Randgold Resources (Kibali).



Breanne Beh

Director Geology, Near Mine Surface and Greenfields Exploration

Joined Wesdome in July 2025

- Former CEO of Angus Gold with 15 years of geology experience.
- All projects worked on acquired by producers - Borden Gold (4.3Moz), Novador (4.1Moz), Golden Sky (Wesdome).
- Key in resource delineation, target generation.



Renan Lopes

Director Mineral Resources, Near Mine Geology, and UG Exploration

Joined Wesdome in June 2025

- 17 Years experience, SLR and Lundin Mining.
- Company QP, geologic and resource modelling, geostatistics.
- Responsible for NI 43-101 compliant resource estimates - directly accountable for June update.



Bruno Turcotte

Geology Superintendent Kiena Gold Mine

Joined Wesdome in July 2018

- 33 years experience, InnovExplo, Richmond Mines.
- Key role in Kiena Deep discovery, advancement of the Kiena geologic models.
- Accountable for underground exploration and resource conversion and growth.



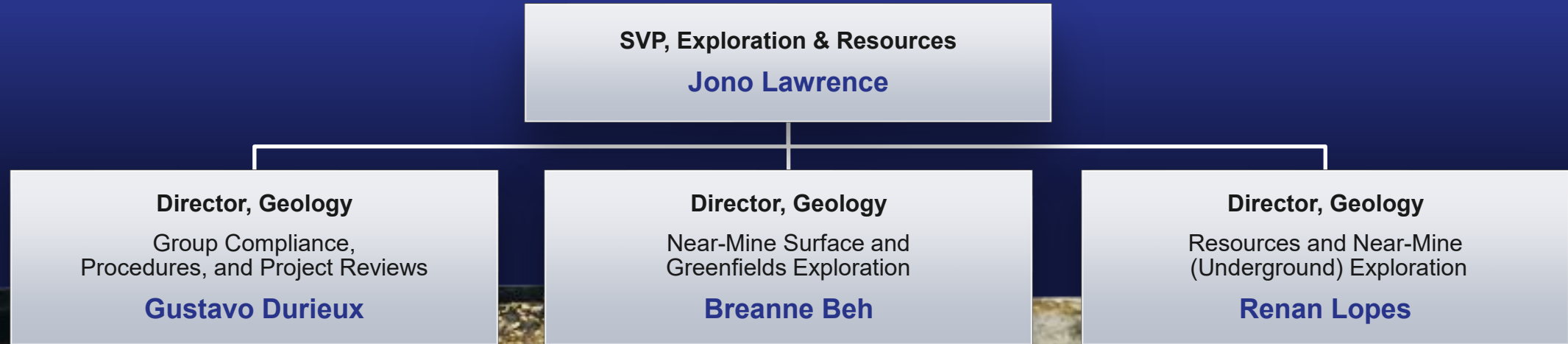
Elfriede Moya

Chief Geologist Eagle River Gold Mine

Joined Wesdome in November 2021

- 15 years experience, Alamos Gold, Brigus Gold.
- Key role in coordination of production and geology teams, advancement of the Eagle River, Mishi, and Magnacon geologic models.
- Accountable for underground exploration and resource conversion and growth.

Building Out the Structure to Support Our Multi-Year Exploration Strategy



Our team is supported by

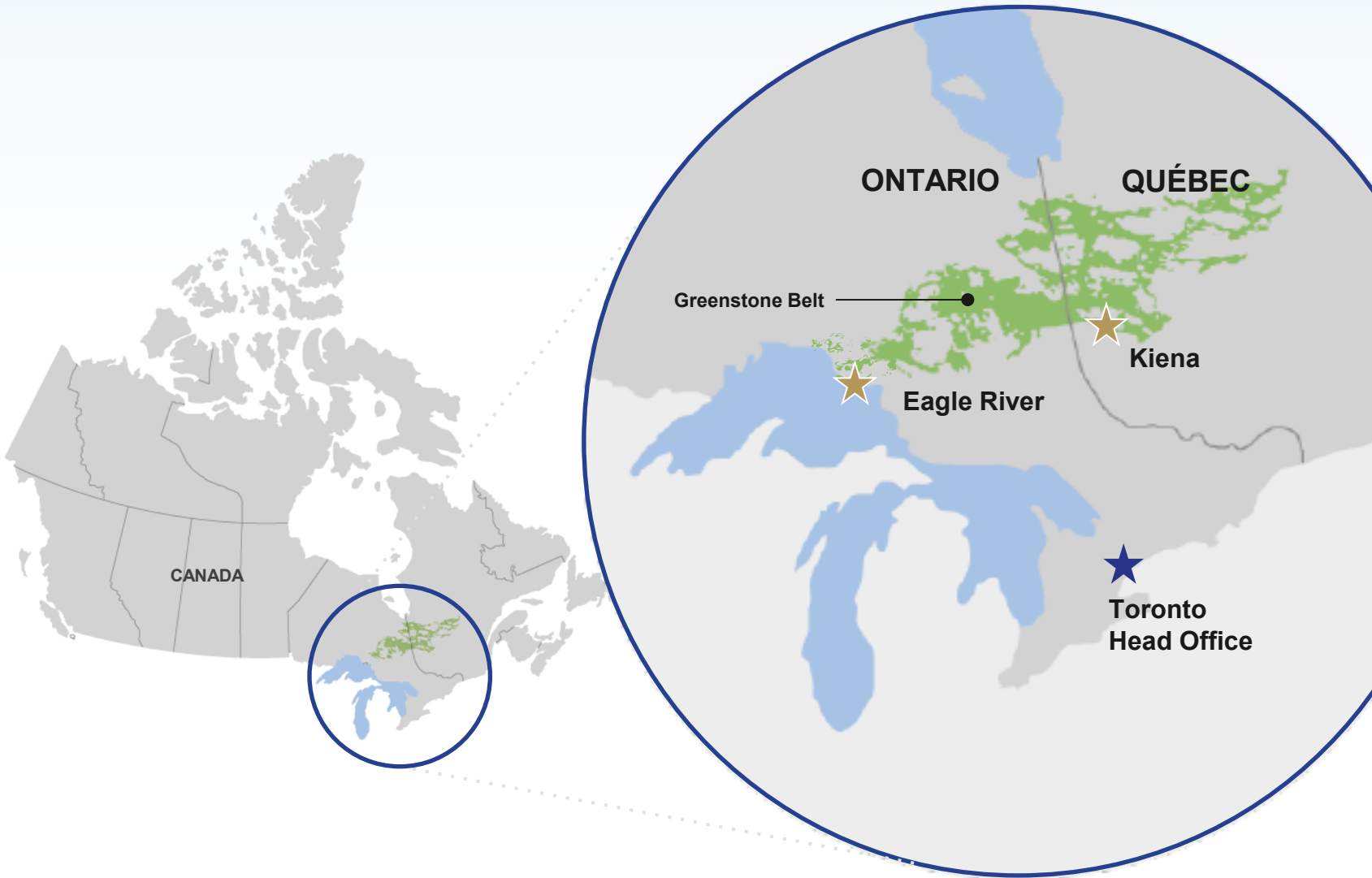




Exploration Strategy



Growing Two of Canada's Highest Grade Gold Mines



★ Eagle River (Producing, 100% Owned)

LOCATION 50 km west of Wawa, ON	RESERVE GOLD GRADE¹ #1 in Canada
GREENSTONE BELT Mishibishu	OPERATING Since 1995
LAND PACKAGE 400 km ²	DRILL RIGS ON SITE 8 (5 underground, 3 surface)



★ Kiena (Producing, 100% Owned)

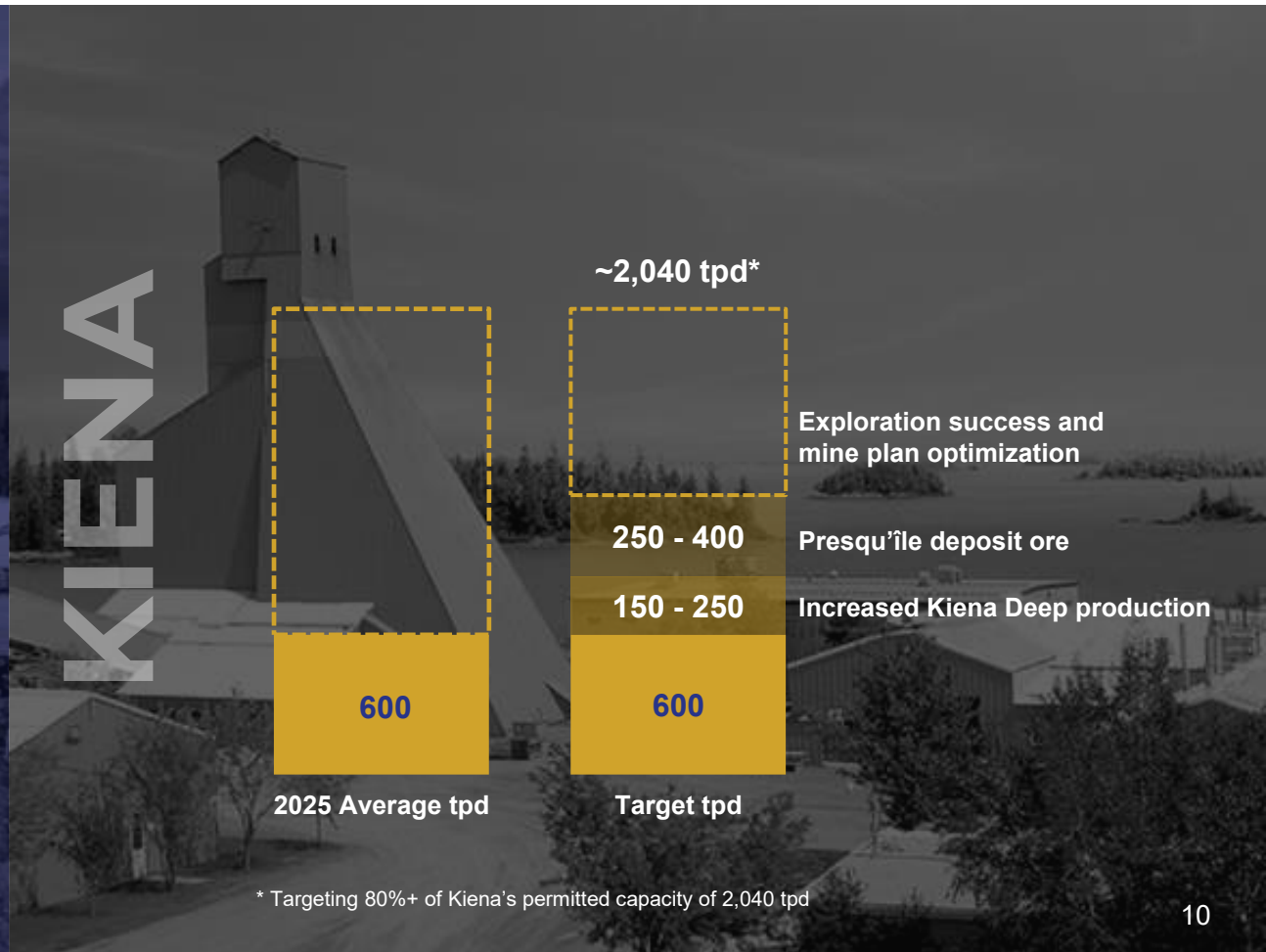
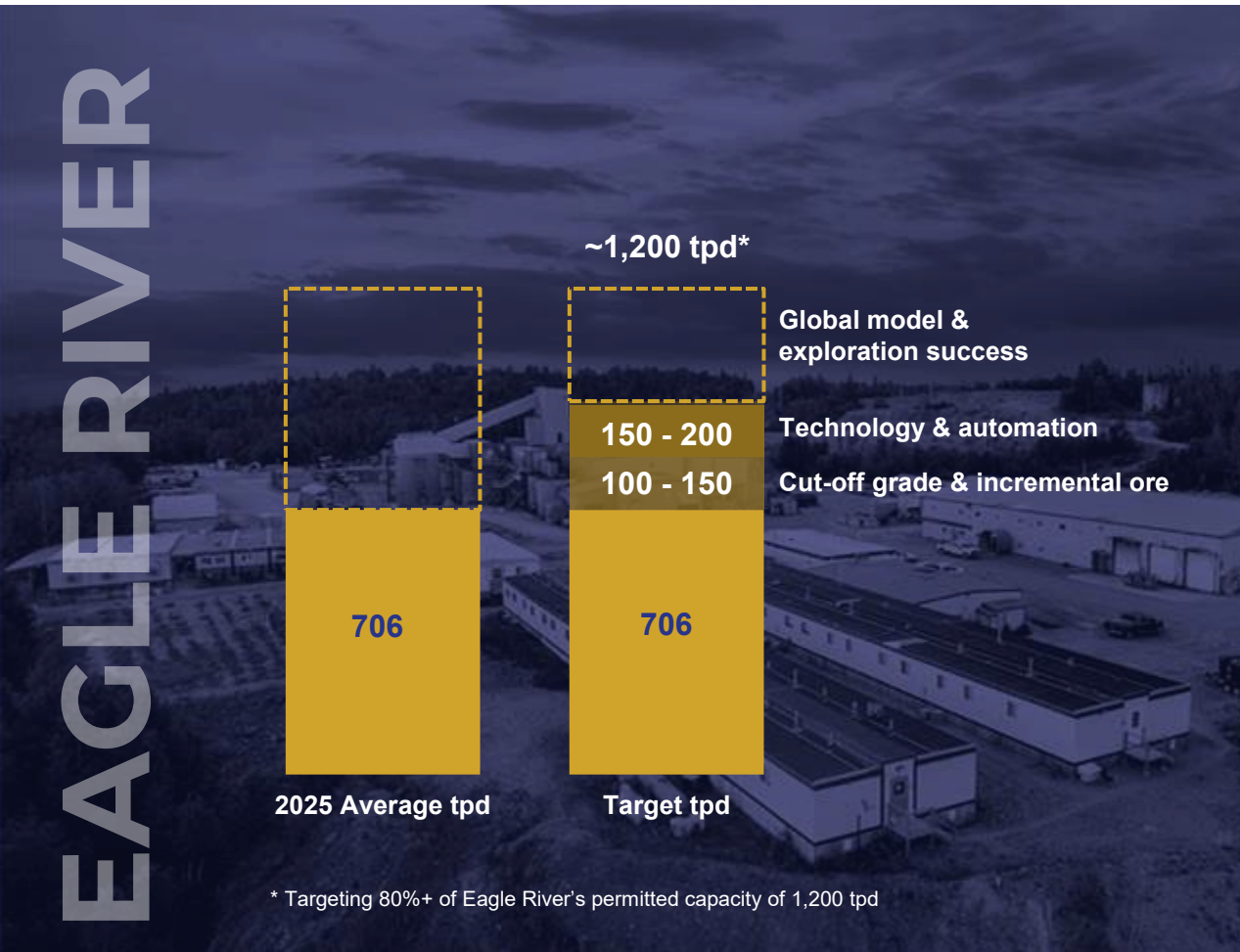
LOCATION Val-d'Or, Québec	RESERVE GOLD GRADE¹ #4 in Canada
GREENSTONE BELT Abitibi	OPERATING 1981-2002, 2006-2013, 2021-
LAND PACKAGE 75 km ²	DRILL RIGS ON SITE 8 (6 underground, 2 surface)



1. Sources: S&P Capital IQ and public company data

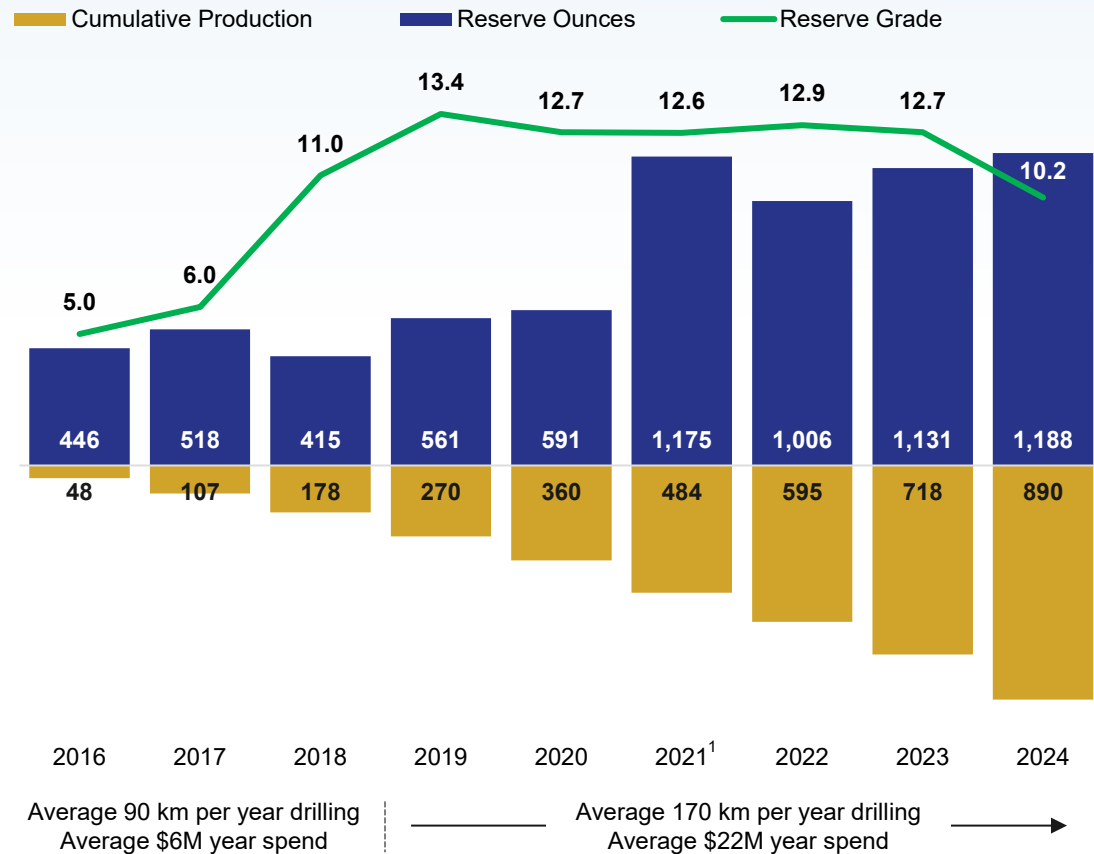
Focused on Delivering Value Through Organic Fill-the-Mill Strategy

- 1** EXPLORATION
- 2** GLOBAL MODEL
- 3** OPTIMIZING & LEVERAGING COSTS

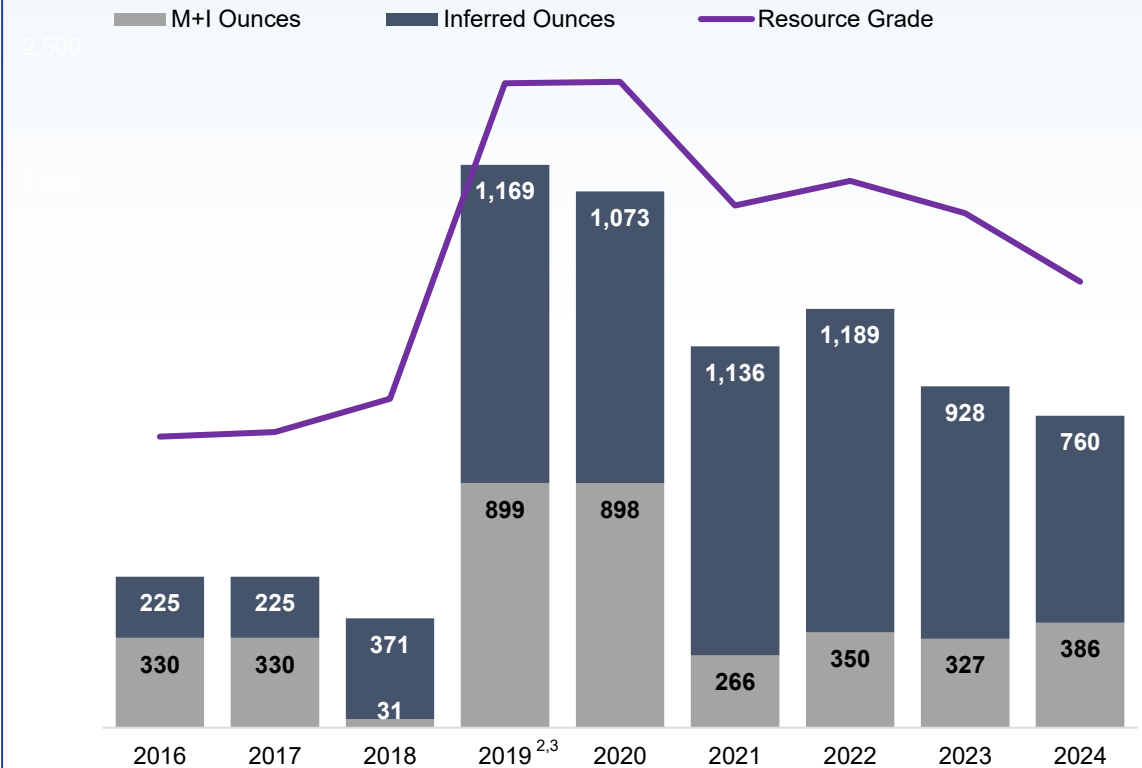


Replacing Reserves While Growing Production at the Cost of Resource Ounces

Production (koz), Reserves (koz) and Reserve Grade (g/t)

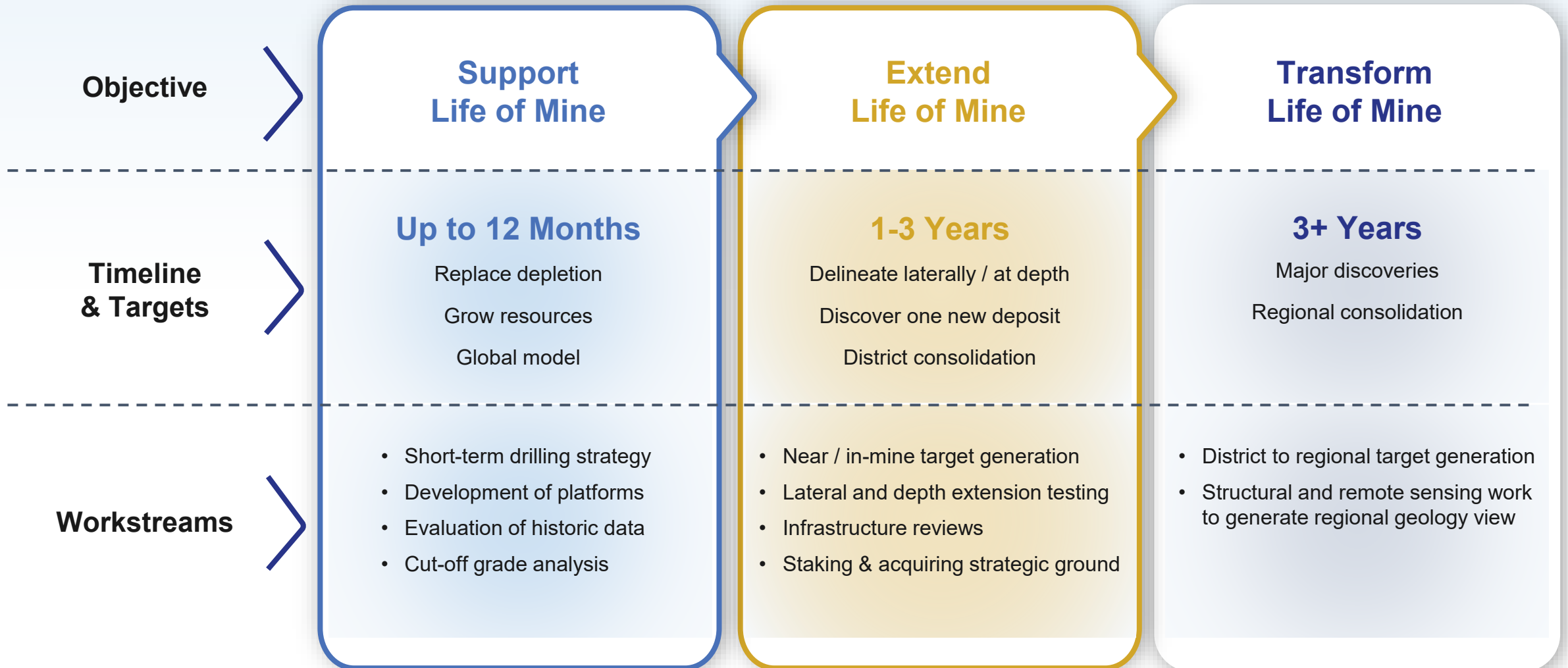


Total Resources Exclusive of Reserves (koz)



1. Maiden Kiema reserve published in 2021 – 651koz proven and probable
2. Maiden Kiema resource published in 2019 – 728koz measured + indicated, 798koz inferred
3. Falcon 720 discovered in 2019, reserve published in 2021

Data-Driven Exploration Strategy Targets High Probability Opportunities

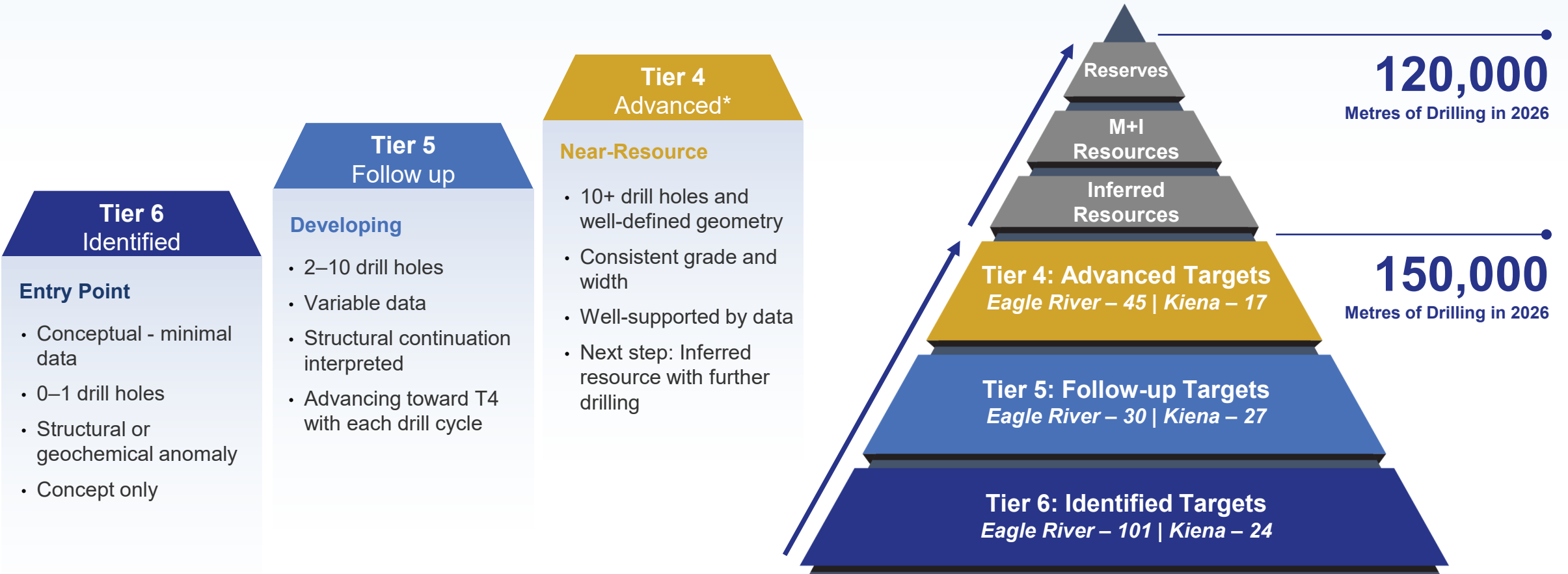


Advancing More Than 240 Known Targets Across the Portfolio

55%
2026 Drilling Focused on Resource Expansion

270,000
Total Metres Drilled in 2026

75%
Conversion from Tier 4 to Resources



* Conversion of ounces from Tier 4 to reserves is ~40% and conversion from inferred resources to reserves is ~53%

+50% of Record Exploration Budget¹ Focused on Growth and Discovery

EAGLE RIVER
\$30M

50%
Delineation
and conversion drilling

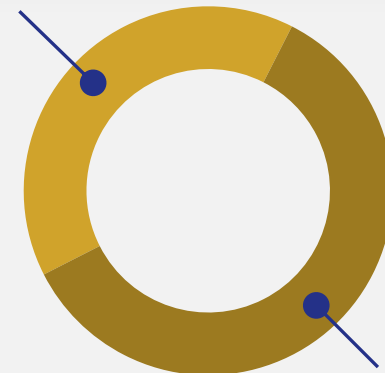


50%
Testing growth
targets²

\$55M
2026 Exploration Budget

KIENA
\$25M

40%
Delineation
and conversion drilling



60%
Testing growth
targets²

1. 2024 - \$36M (189 km), 2025 - \$39M (207 km)
2. Growth targets defined as outside of existing mineralized wireframes

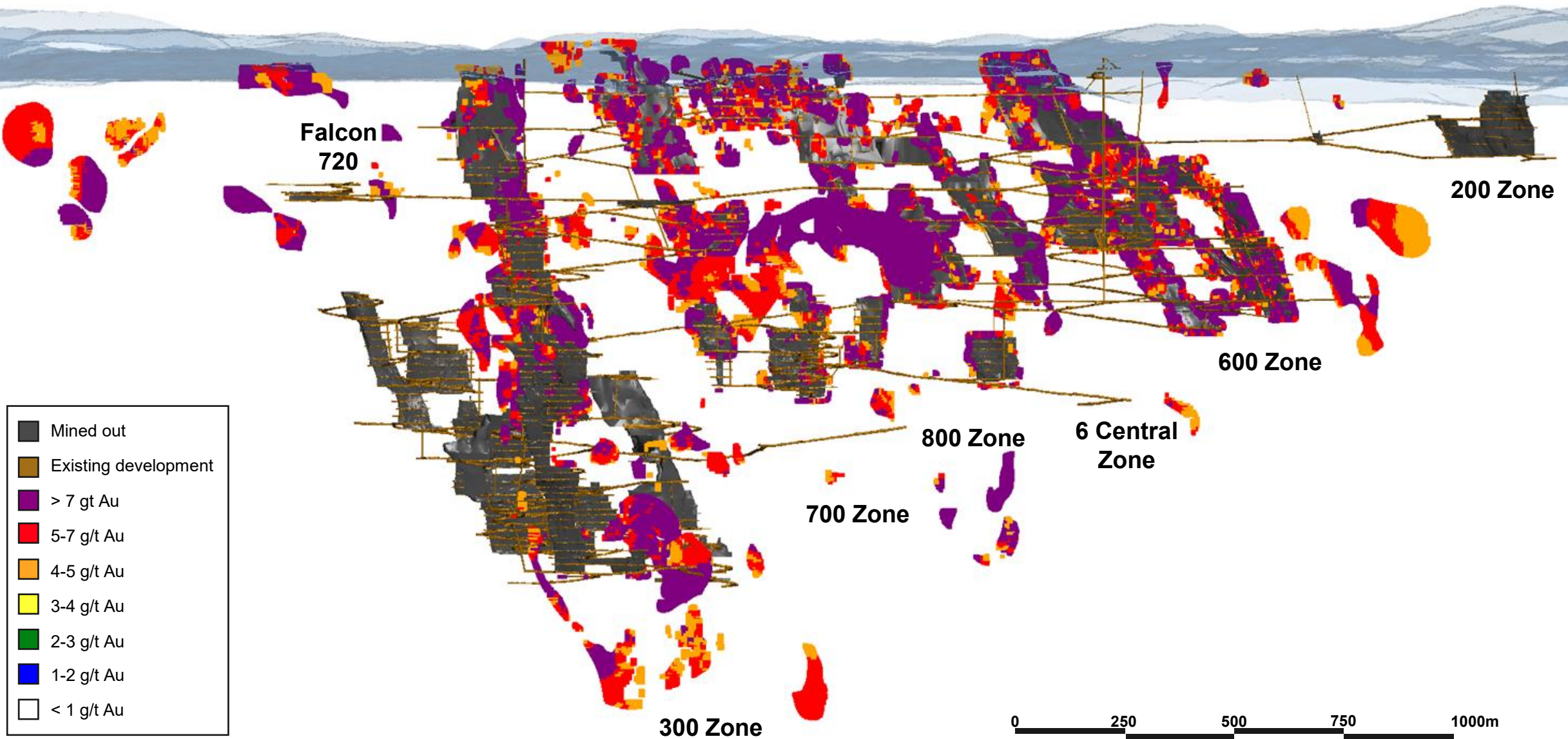
A photograph of three construction workers in an industrial setting. They are wearing orange high-visibility safety jackets, blue hard hats, and safety glasses. They are standing behind a yellow safety railing and looking towards the right. The background shows industrial structures with corrugated metal siding and pipes. On the left side of the image, there is a dark blue vertical bar with a yellow geometric shape that resembles a stylized letter 'A' or a similar symbol.

Eagle River Global Model

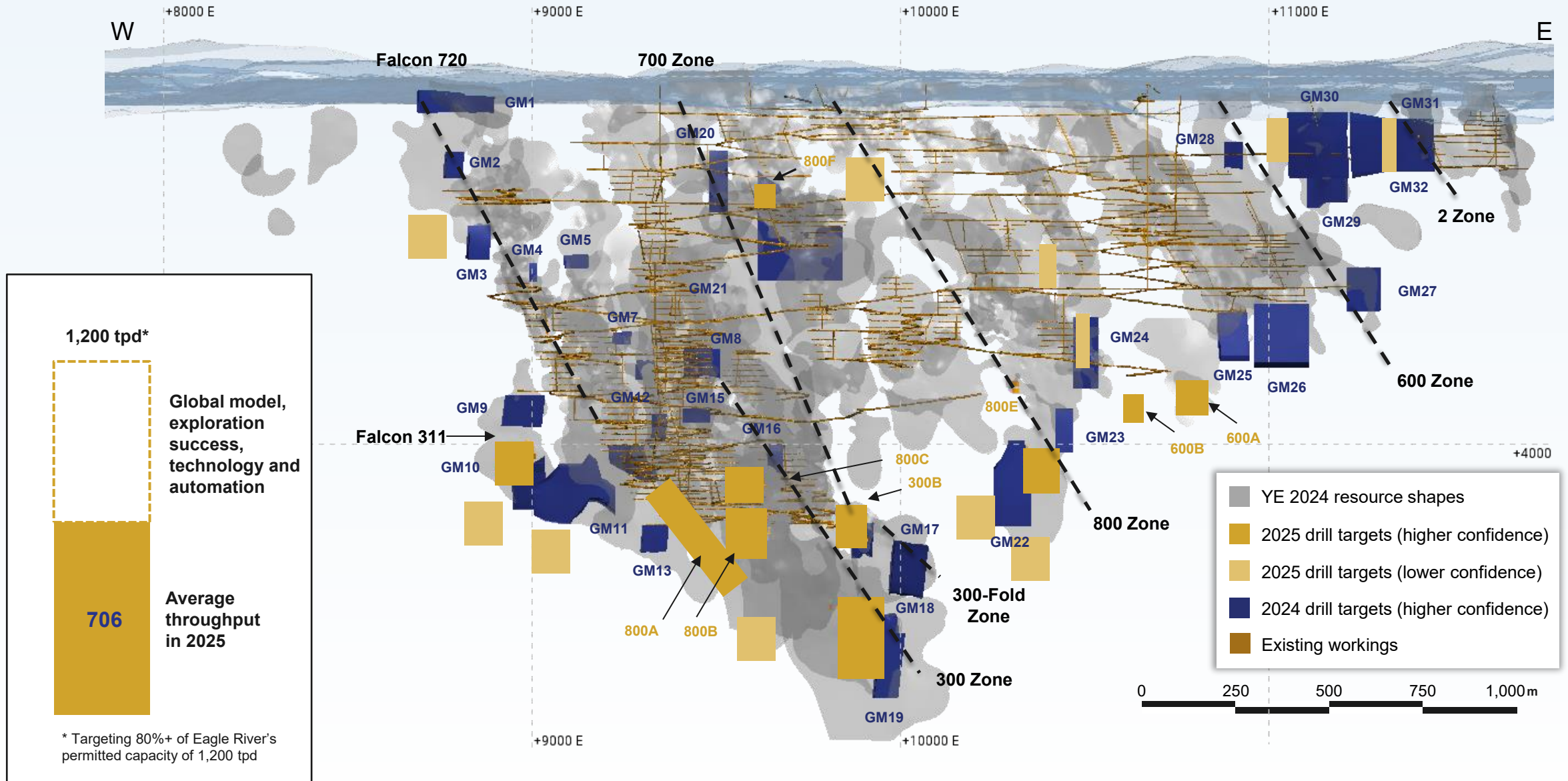
Capital Efficient Global Model Continues to Highlight New Opportunities

W

E



Global Model Work Has Prioritized More Than 50 Target Areas To Date





Eagle River Geology & Exploration

Eagle River: Redefining the Asset that Built Wesdome

OVERVIEW

More than 2Moz produced over 30 years of continuous production.

OPERATIONAL MILESTONES



2025 Production
~113,000 oz

A white-bordered box containing an aerial view of a mine site with several large cylindrical tanks and industrial buildings. The text is centered over the image.

2025 Grade
14.2 g/t Au

A white-bordered box containing an aerial view of a mine site with several large cylindrical tanks and industrial buildings. The text is centered over the image.

2025 AISC
US\$1,446/oz

A white-bordered box containing an aerial view of a mine site with several large cylindrical tanks and industrial buildings. The text is centered over the image.

Targets Identified
176

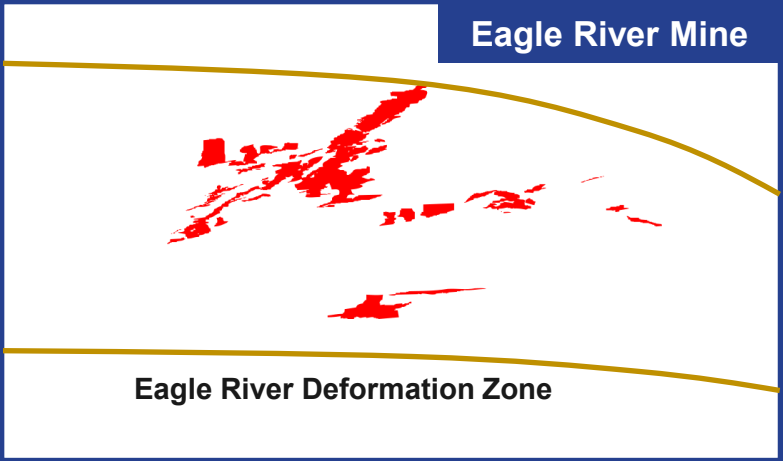
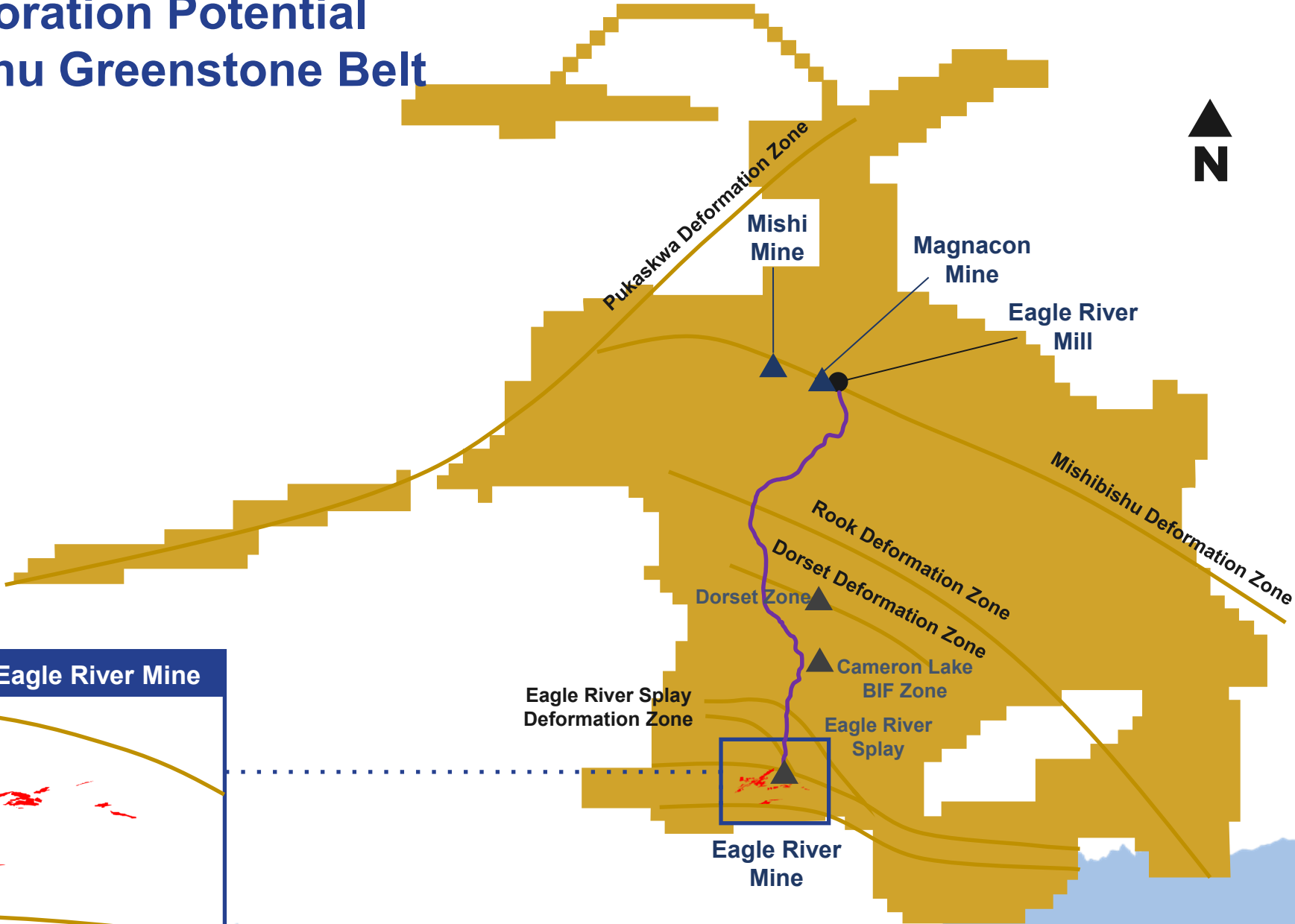
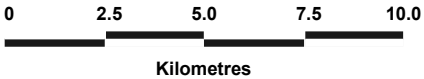
A white-bordered box containing an aerial view of a mine site with several large cylindrical tanks and industrial buildings. The text is centered over the image.

A World-Class District with Multiple Active Producers & Regional Infrastructure

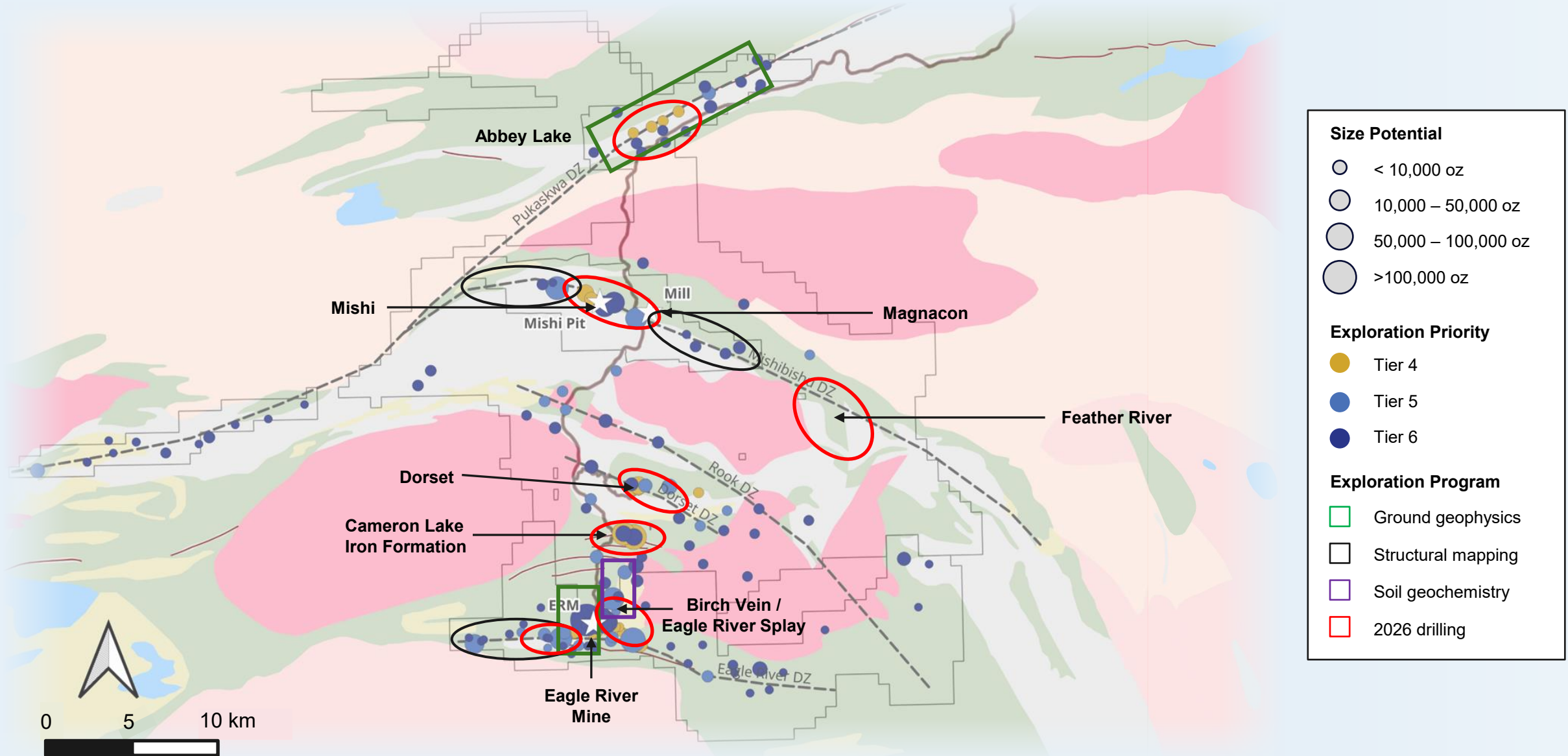


1. Hemlo Mining Corp. NI 43-101 Technical Report effective December 31, 2024
 2. Alamos Gold Island Gold NI 43-101 Technical Report effective February 3, 2026

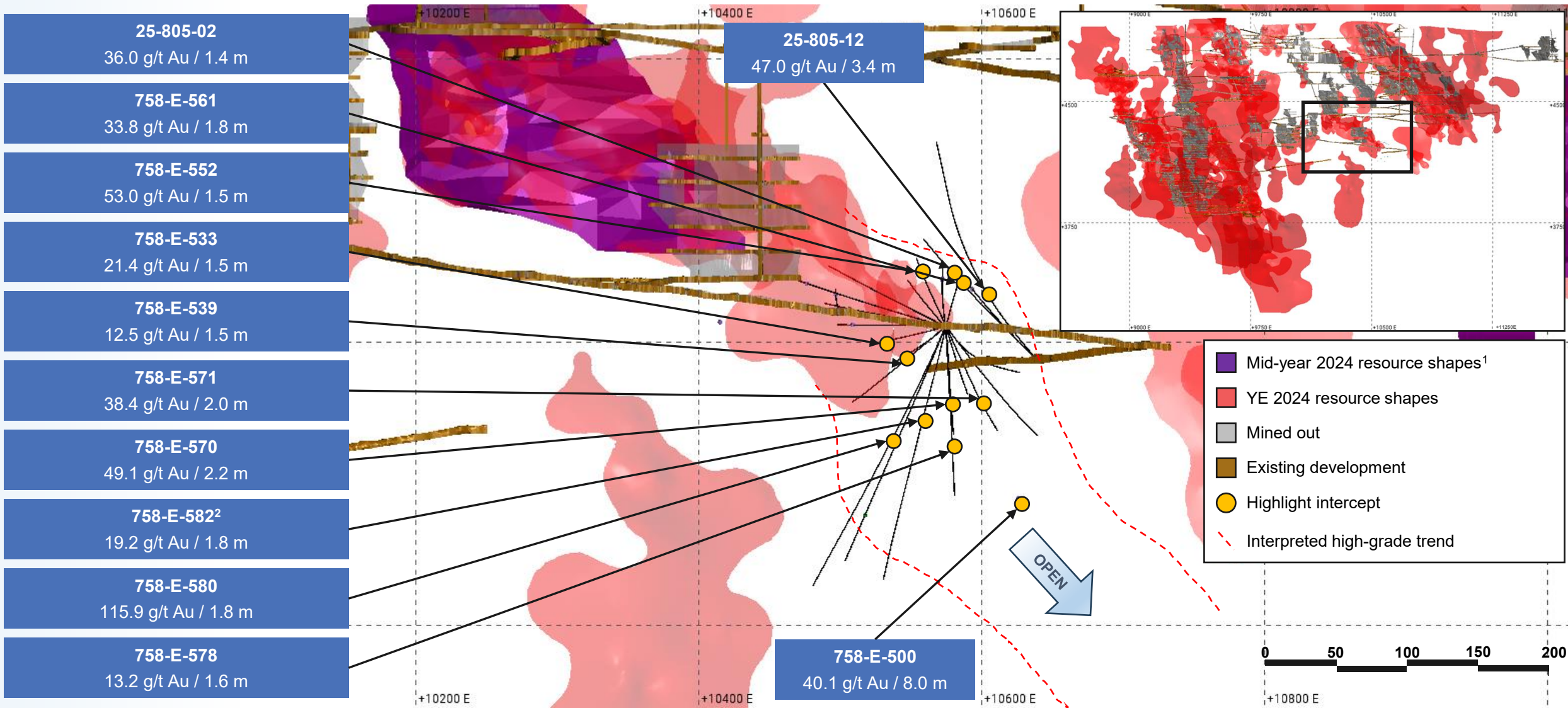
400 km² of Exploration Potential on the Mishibishu Greenstone Belt



100+ Targets With More than 145,000 Metres of Drilling Planned for 2026



6 Central Zone: Grown to More Than 600 Metres Down-Plunge Since Discovery



1. As reported in previous Eagle River exploration update published January 21, 2025
 2. 6 Central Parallel Zone

Mishi-Magnacon Corridor – 15 Kilometres of Opportunity Driven by New Geological Interpretation

HISTORIC DRILLING

Returned high-grade results that were never followed up

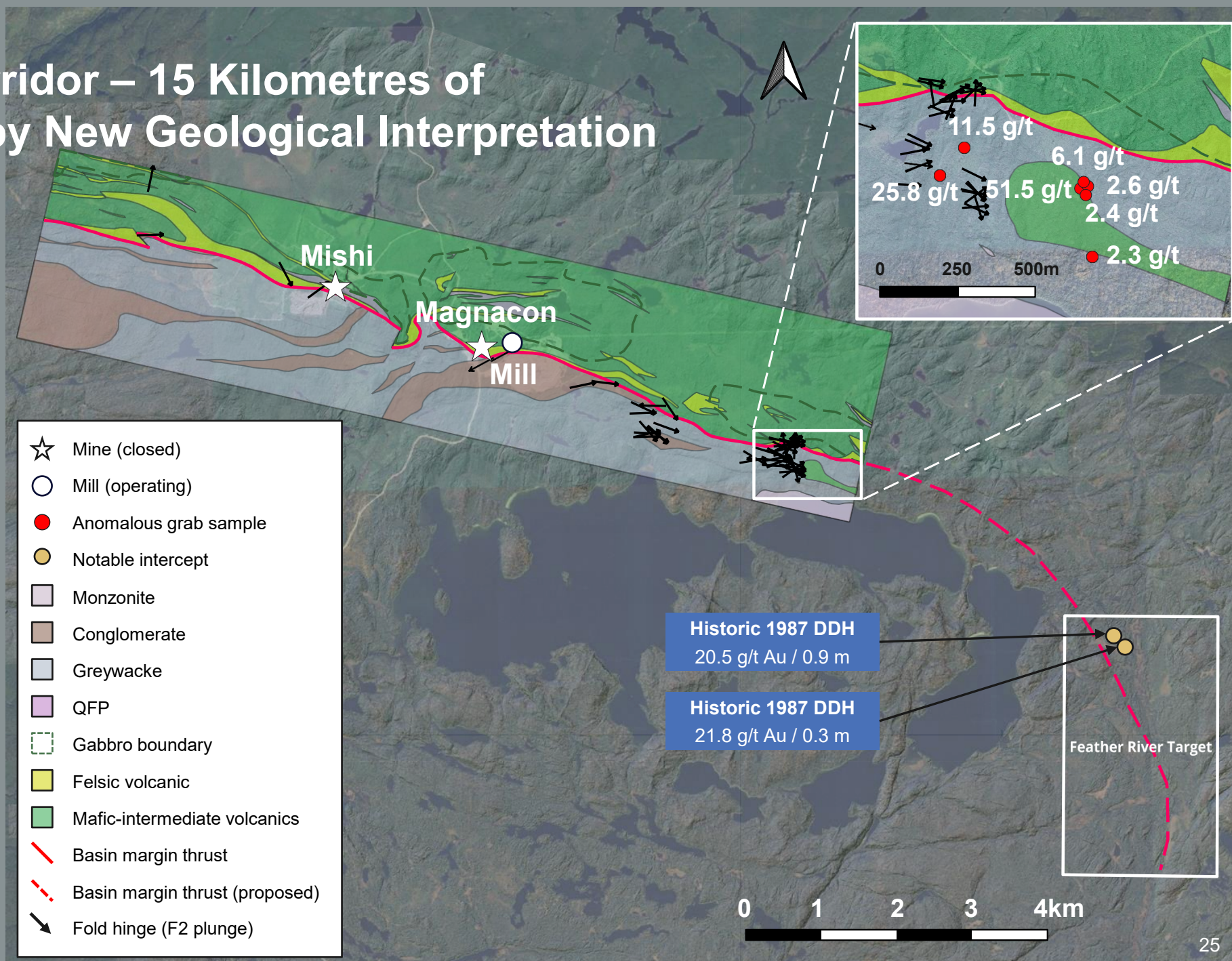
HISTORIC PRODUCTION

MISHI MINE

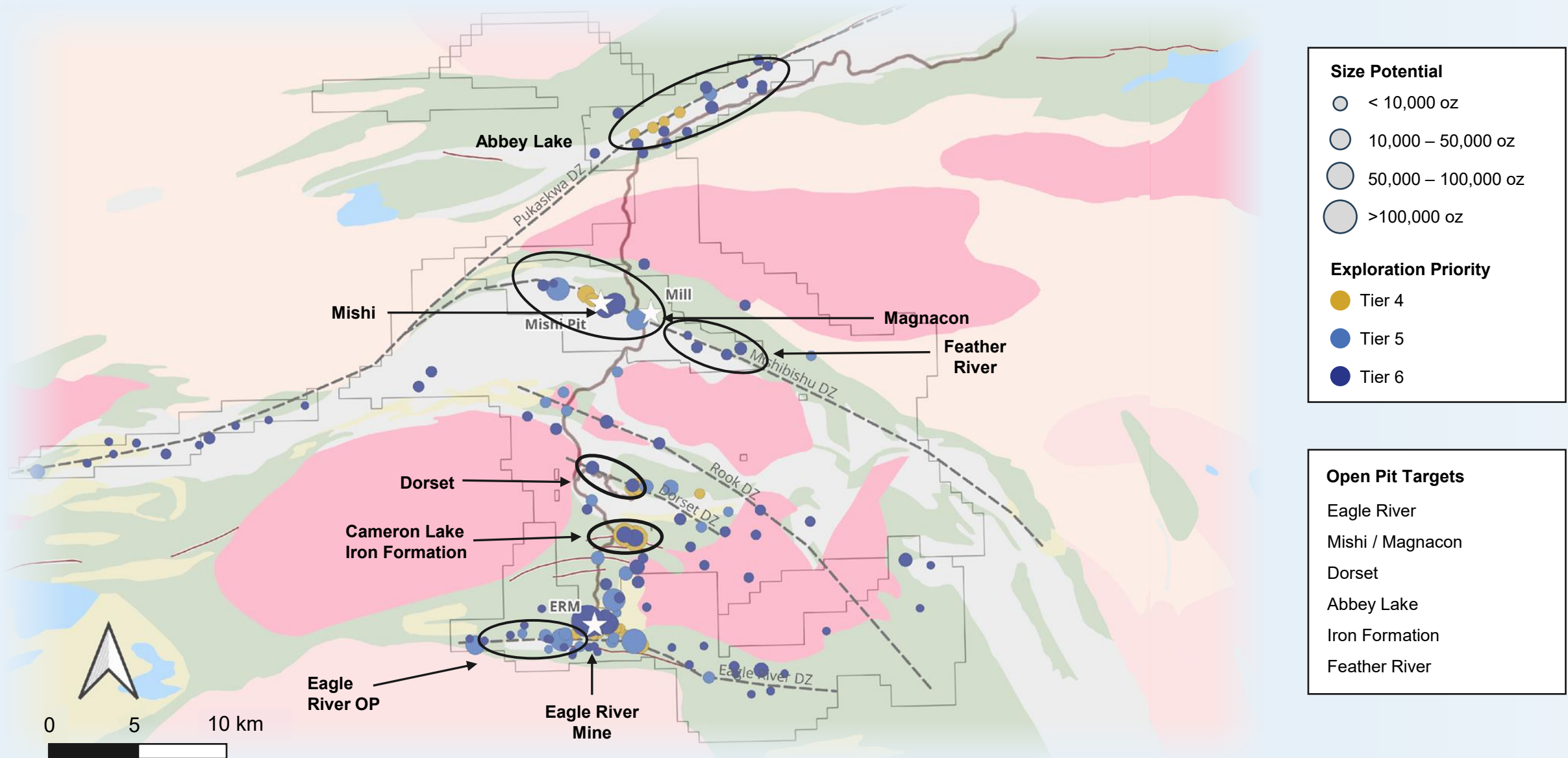
67koz at 2.5g/t

MAGNACON MINE

43koz at 5.6g/t



Multiple Potential Open Pit Opportunities Offer Long-Term Growth Potential



Kiena Geology & Exploration



Kiena: Building Another Cornerstone Asset

OVERVIEW

Decades of operational history. More than 2 million ounces of gold produced.

OPERATIONAL MILESTONES



2025 Production
~73,000 oz

2025 Grade
10.5 g/t Au

2025 AISC
~US\$1,628/oz

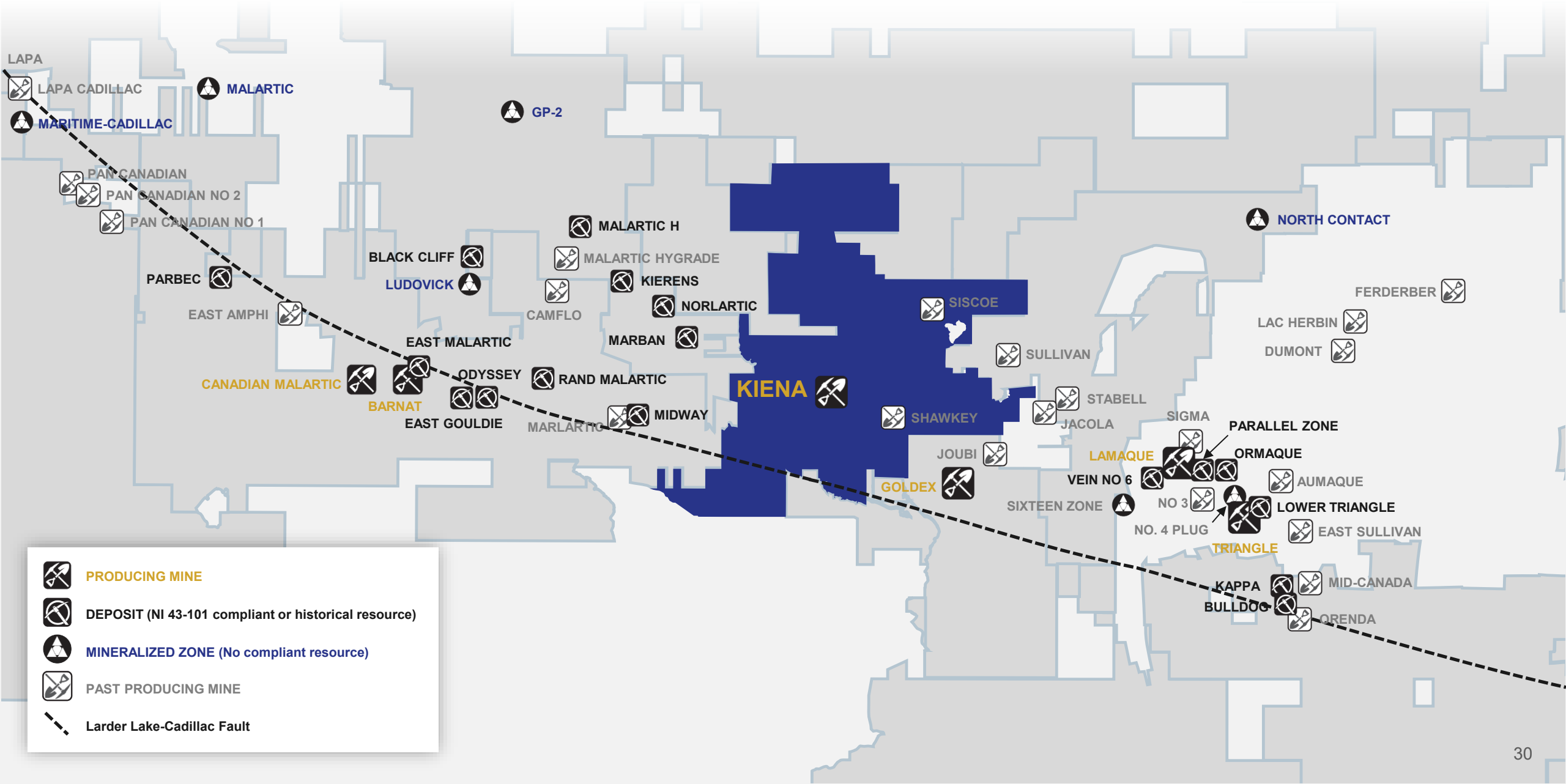
Targets Identified
68

1. Discovery hole 6125: 16.95 metres (core length) at 18.80 g/t Au (capped; 192.95 g/t Au uncapped)

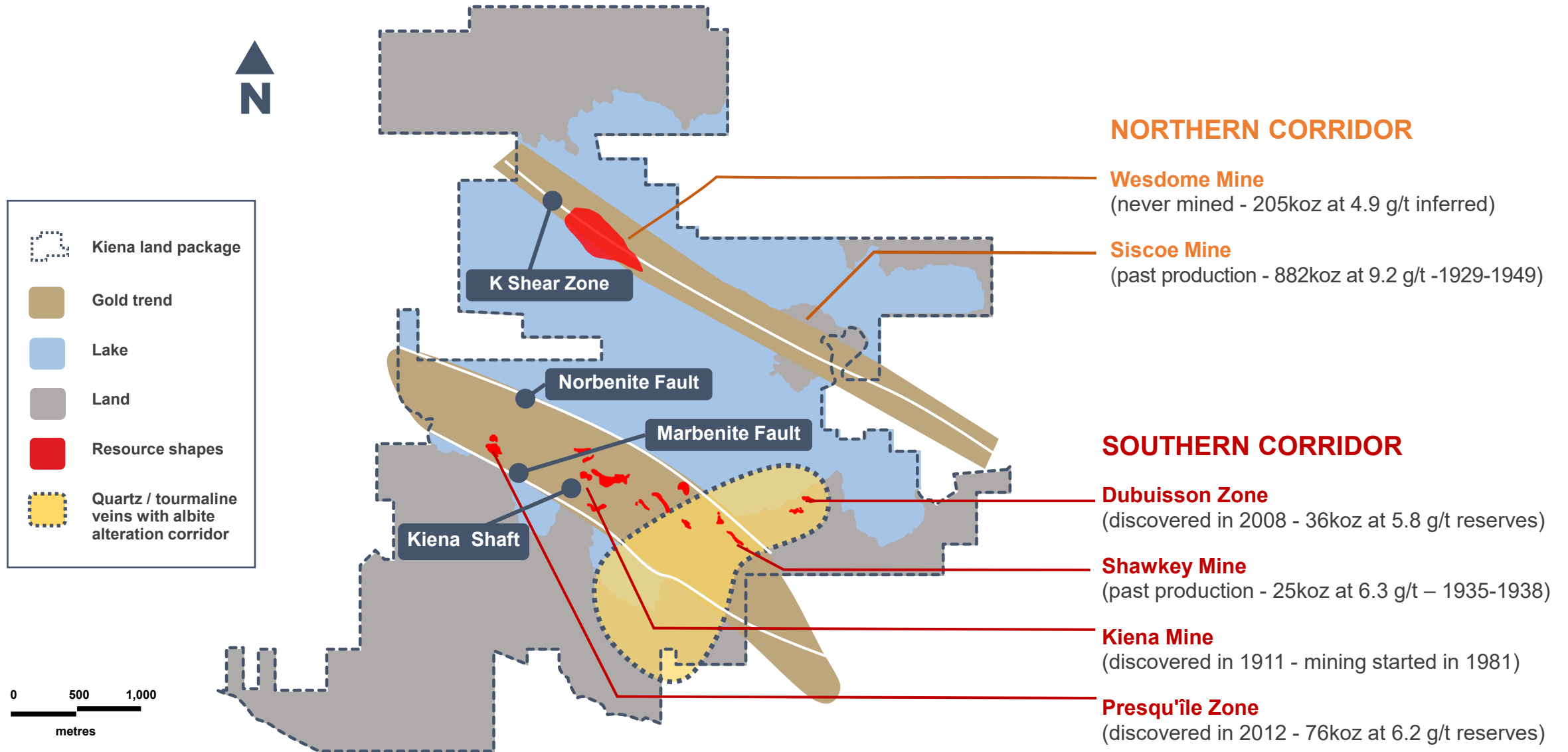
Kiena: Situated in the Heart of the World's Pre-eminent Greenstone Belt



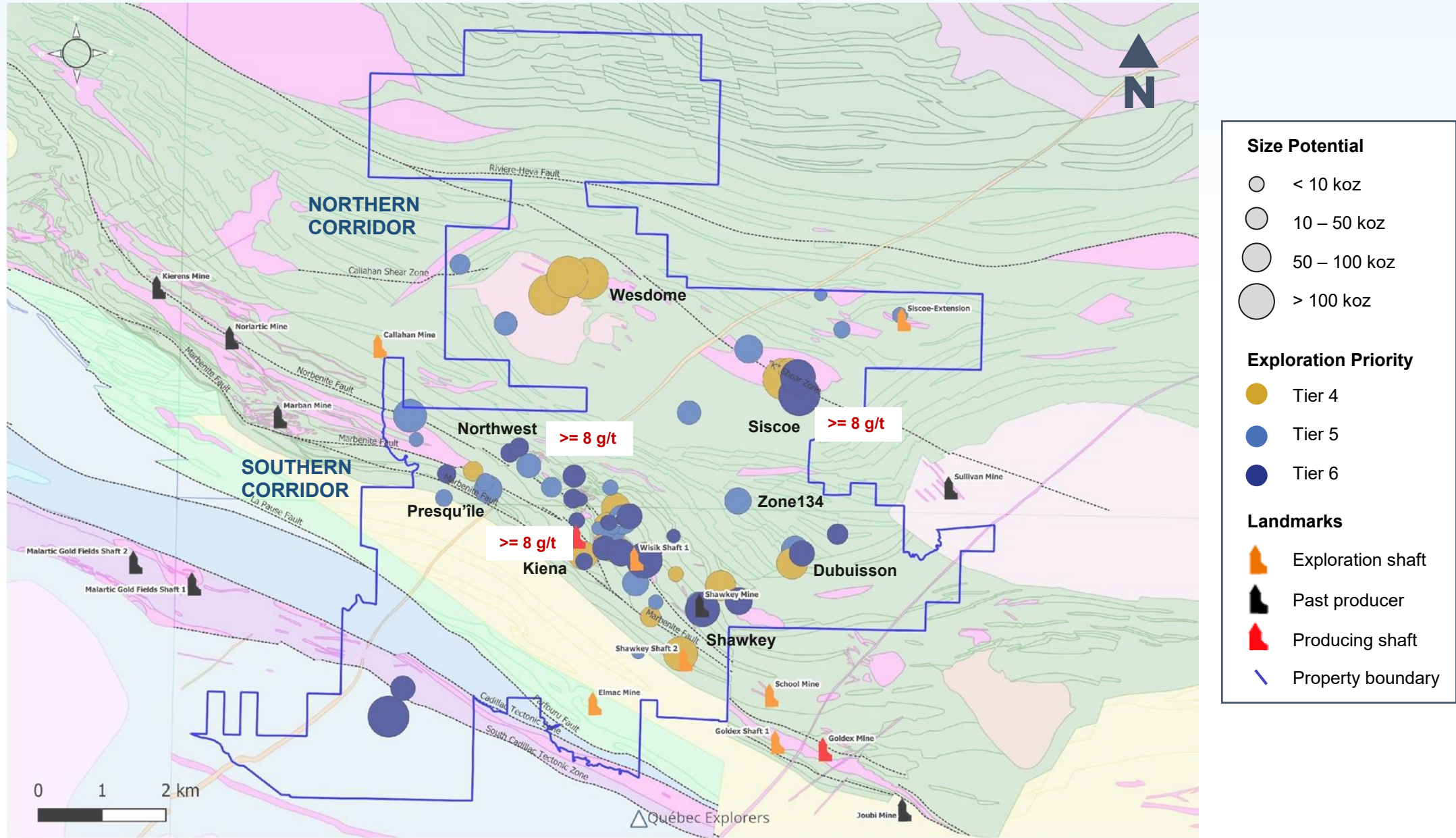
Kiena: Underexplored and Surrounded by Multiple World-Class Deposits



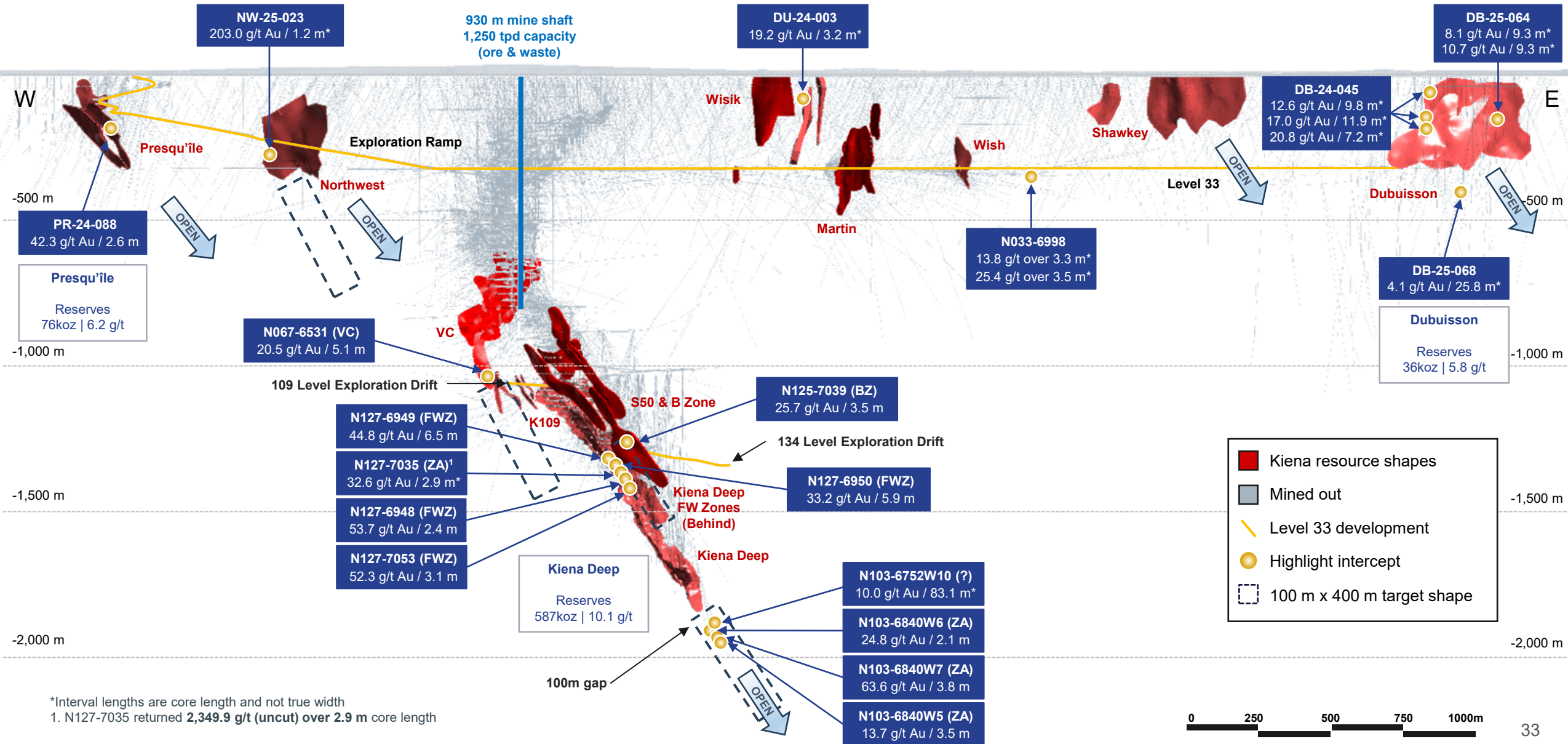
Largely Unexplored Prolific Land Package at Kiena



Two Major Corridors With High-Grade and Bulk-Tonnage Potential



Most Known Areas Less Than 500 Metres Below Surface; Shallow for the Abitibi

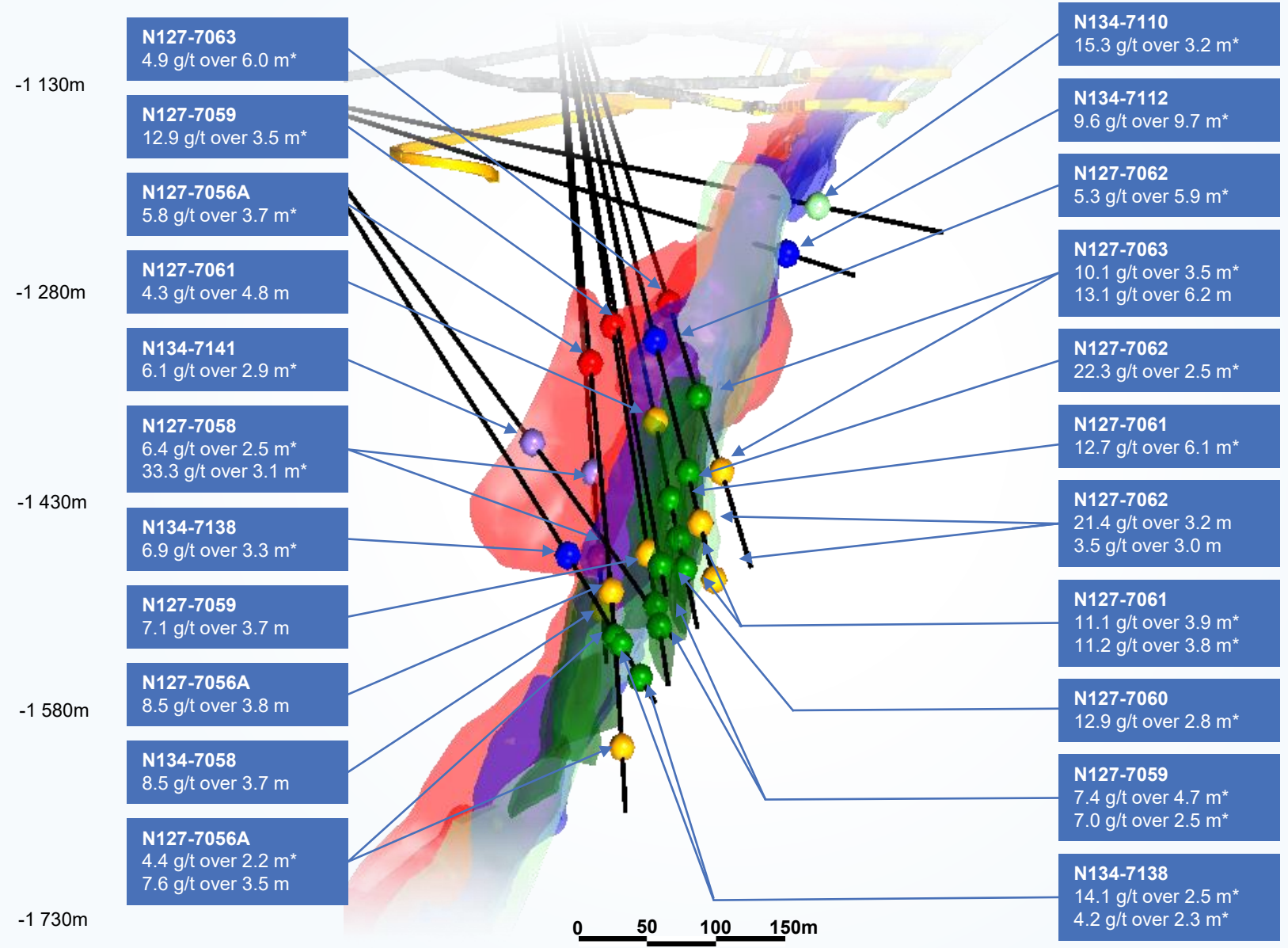
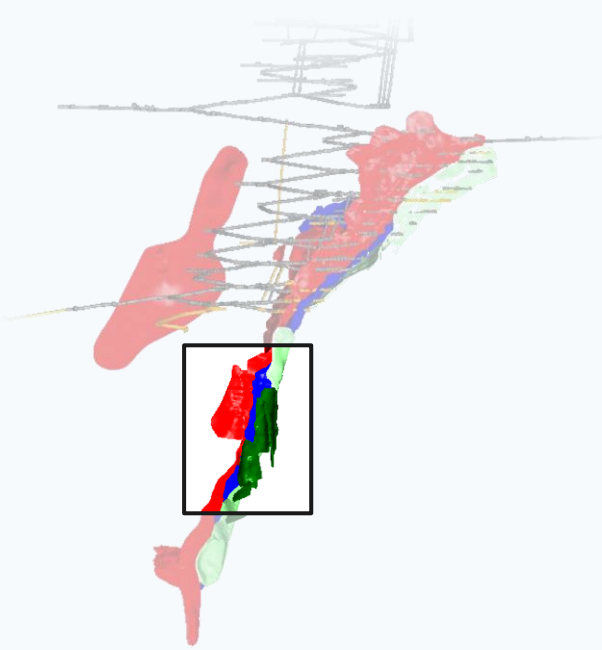


*Interval lengths are core length and not true width
1. N127-7035 returned 2,349.9 g/t (uncut) over 2.9 m core length

Three New High-Grade Lenses Highlight Potential of Kiena Deep





Drill Intercept Legend

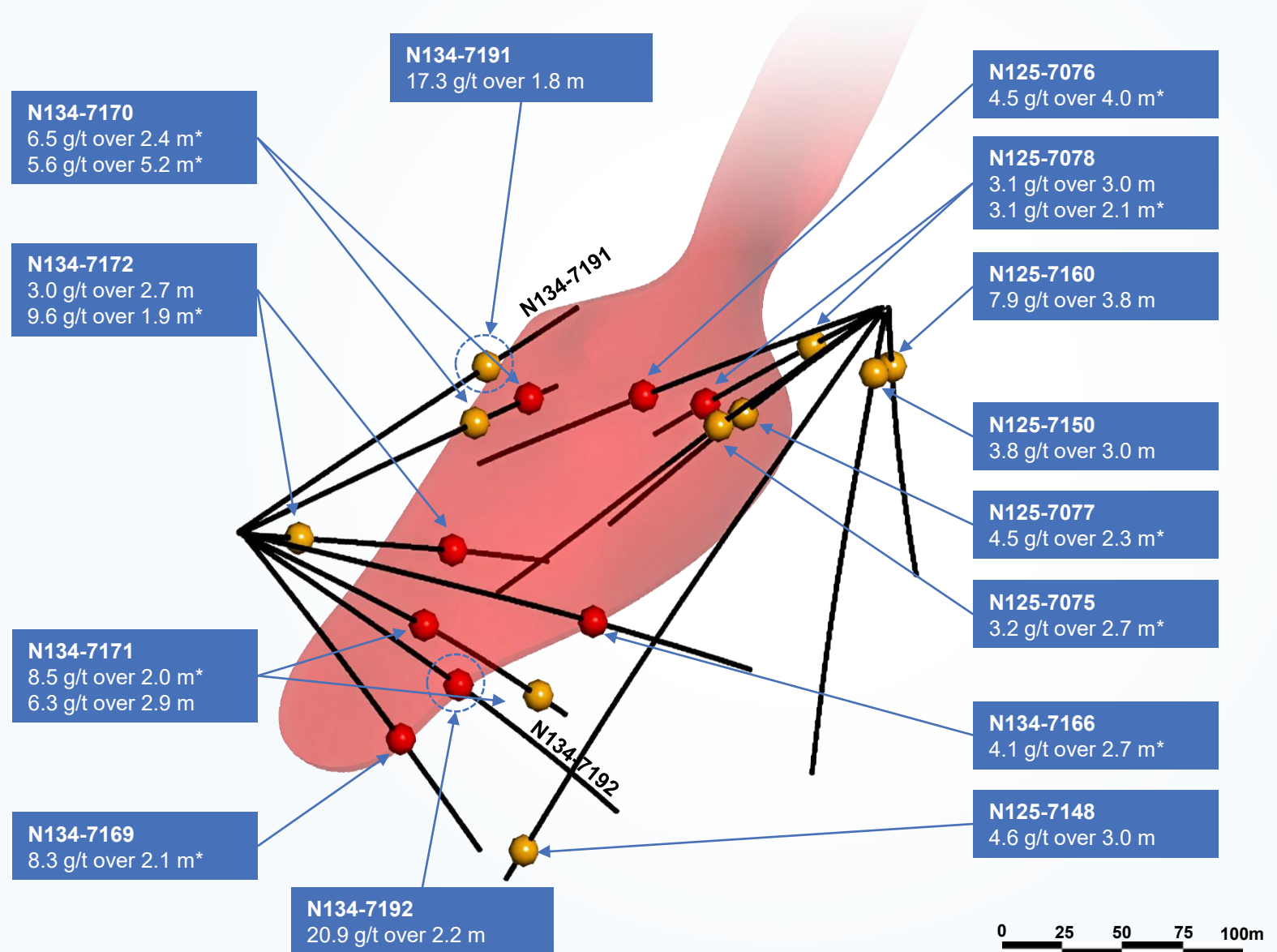
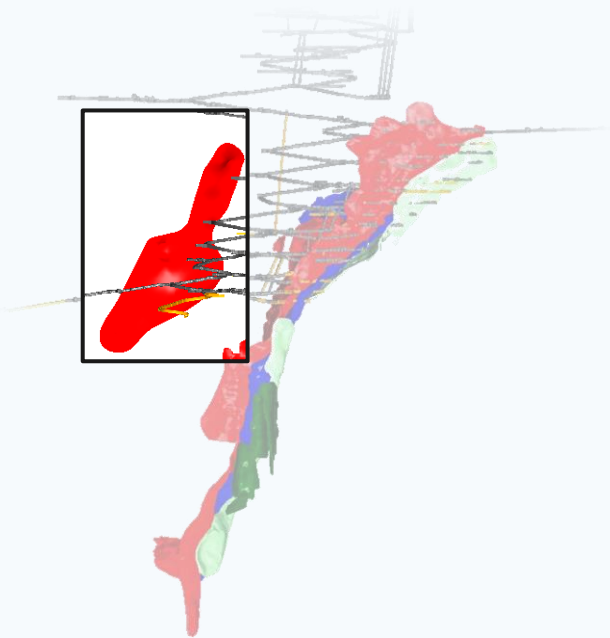
- Drill trace
- Existing development
- Planned development
- A Zone intercept
- A1 Zone intercept
- A2 Zone intercept
- BZA intercept
- Footwall Zone intercept
- Unassigned intercept
- m* Estimated true width
- m Core length



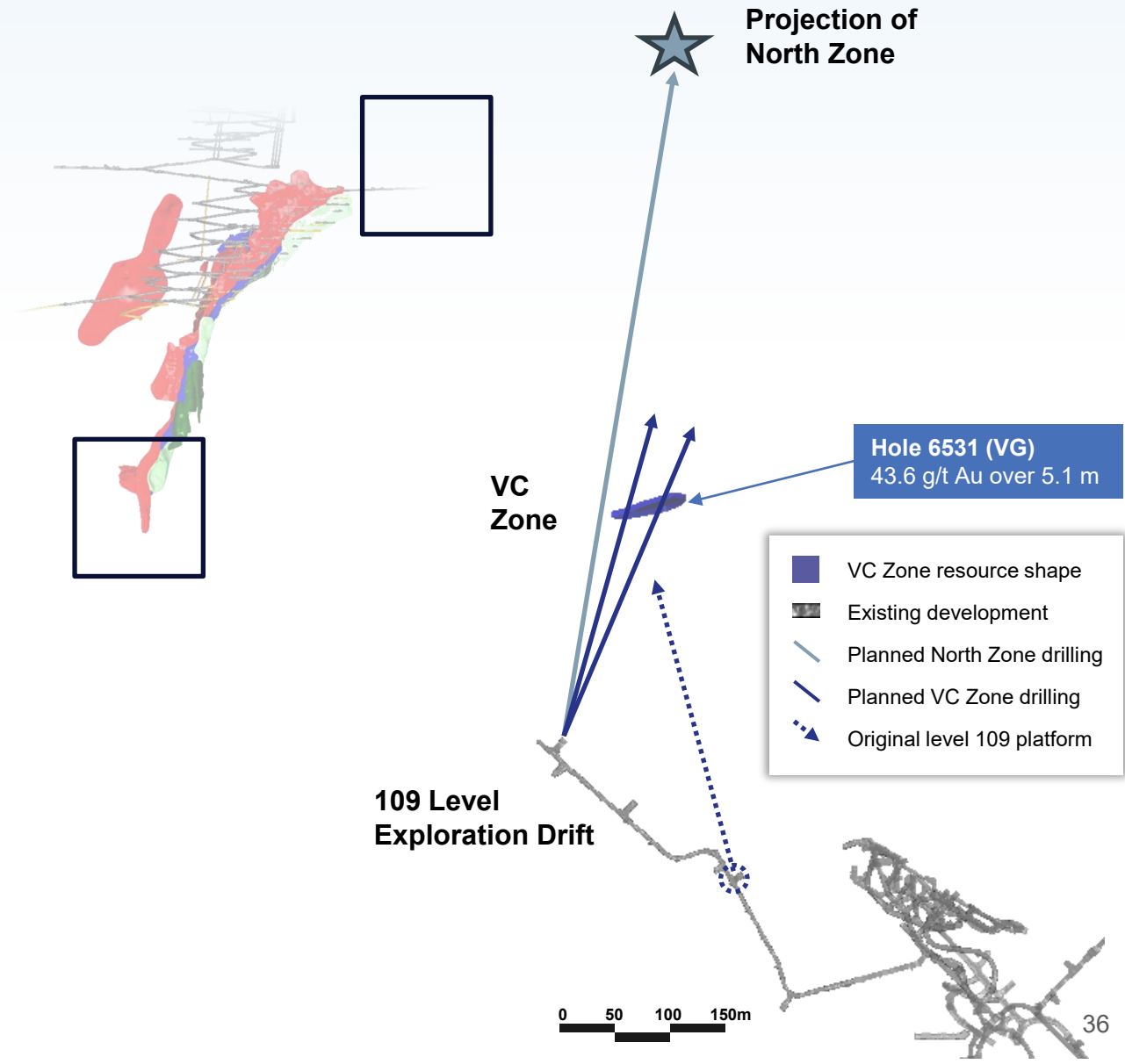
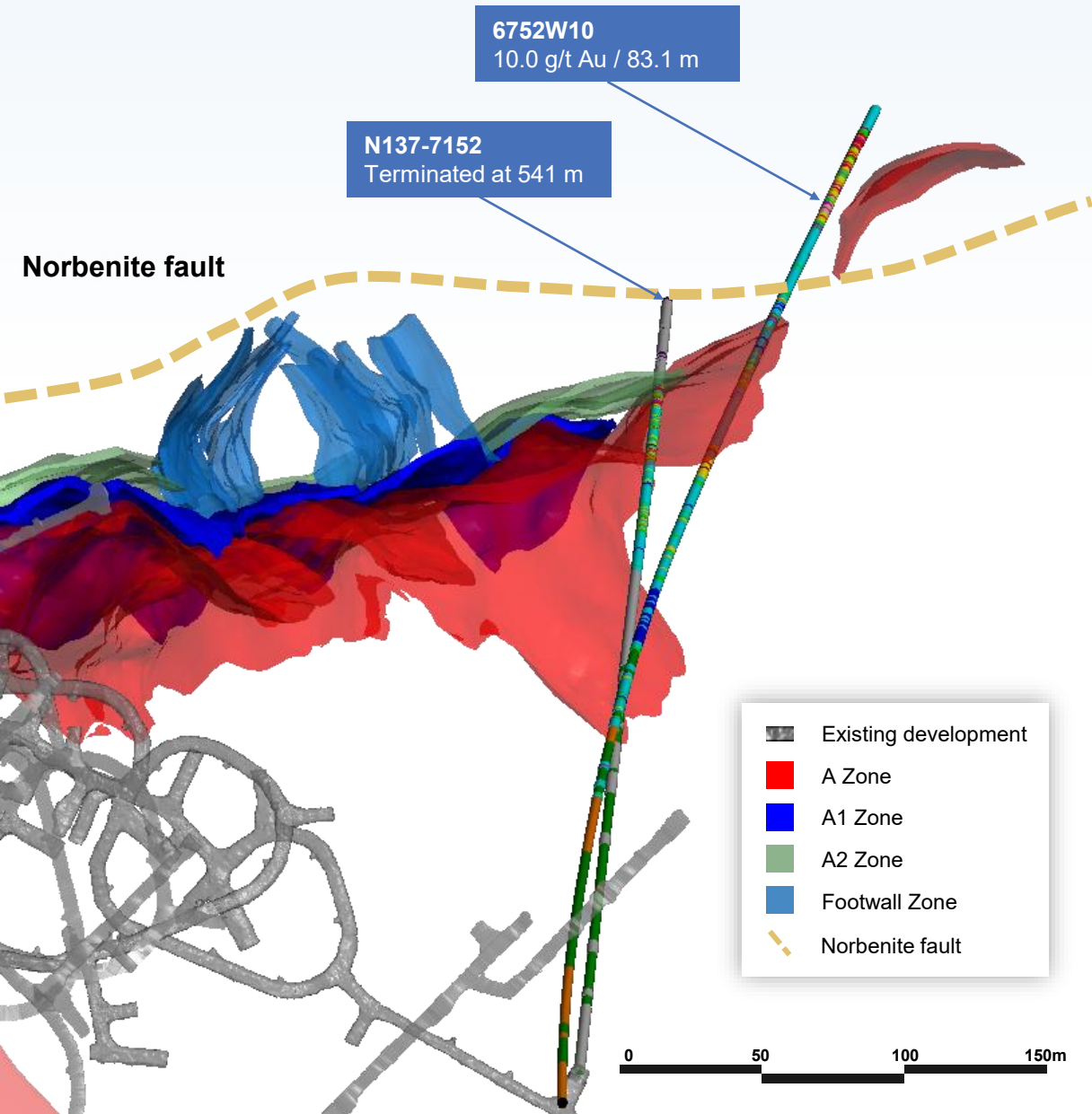
Visible Gold and Multiple New Lenses Highlight B Zone Potential

Drill Intercept Legend

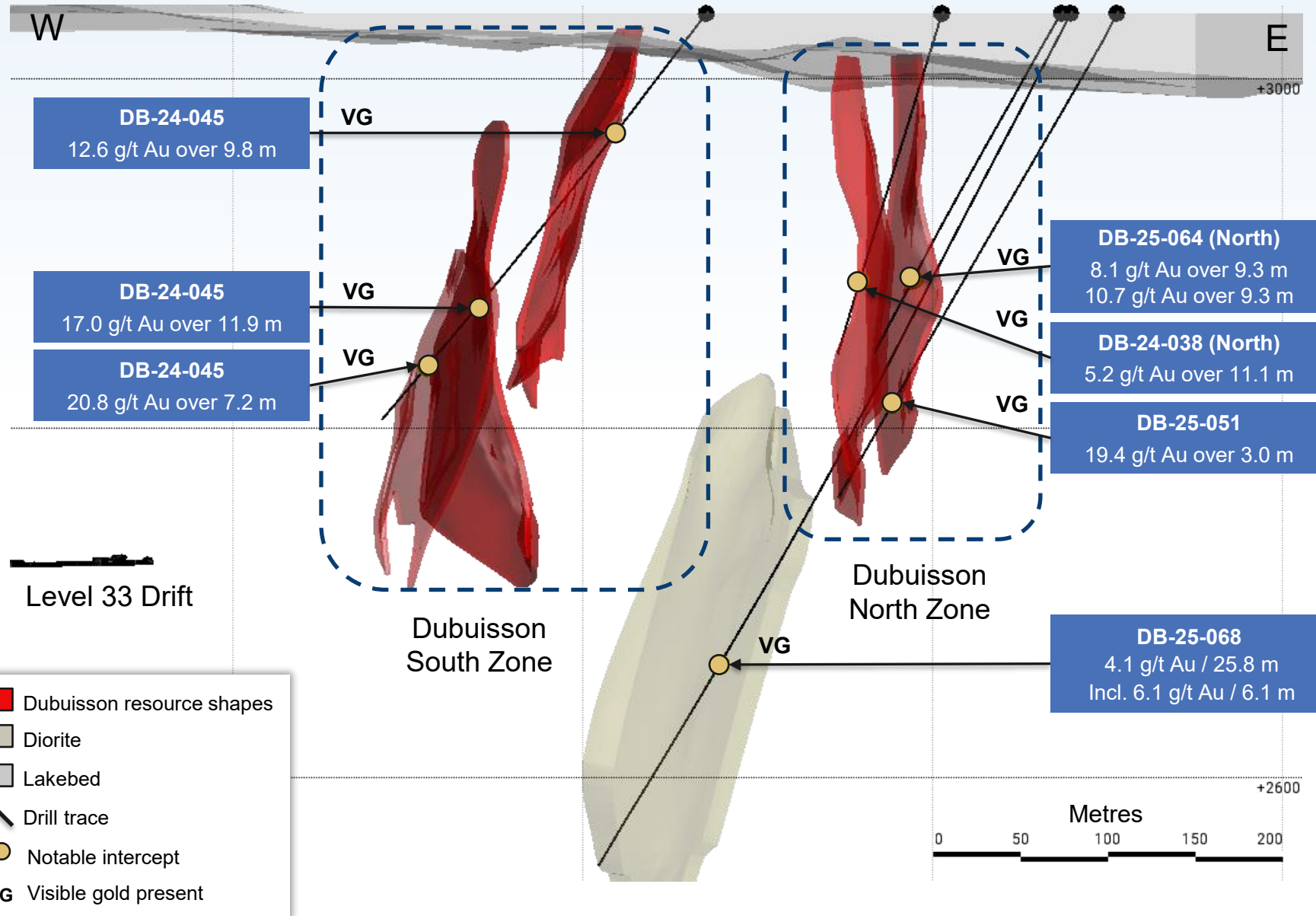
-  Drill trace
-  B Zone intercept
-  Unassigned intercept
- m* Estimated true width
- m Core length
-  New intervals with VG



Looking for Discoveries Beyond the Norbenite Fault and in the VC Zone



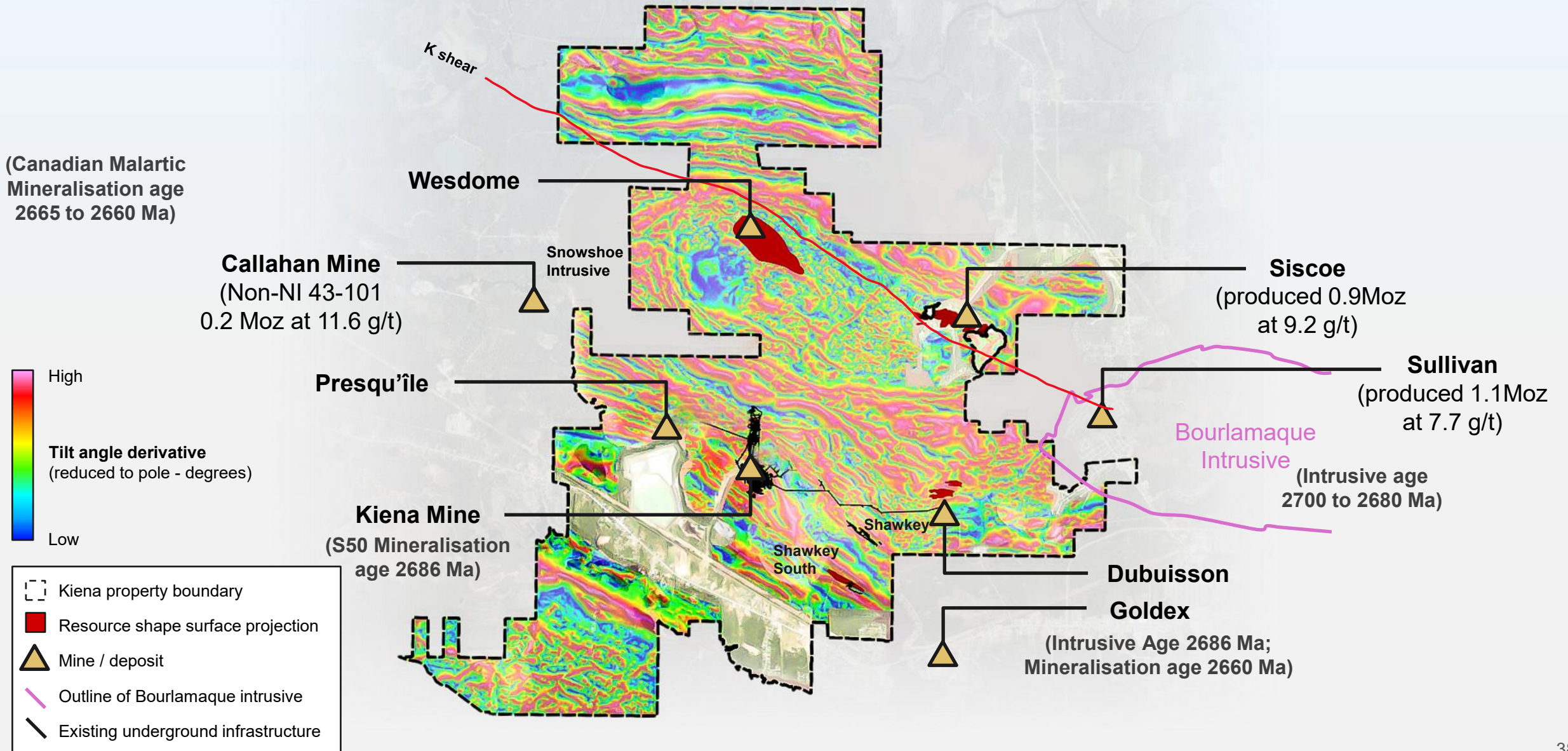
Dubuisson a Potential Game Changer Delivering Impressive Grades and Widths



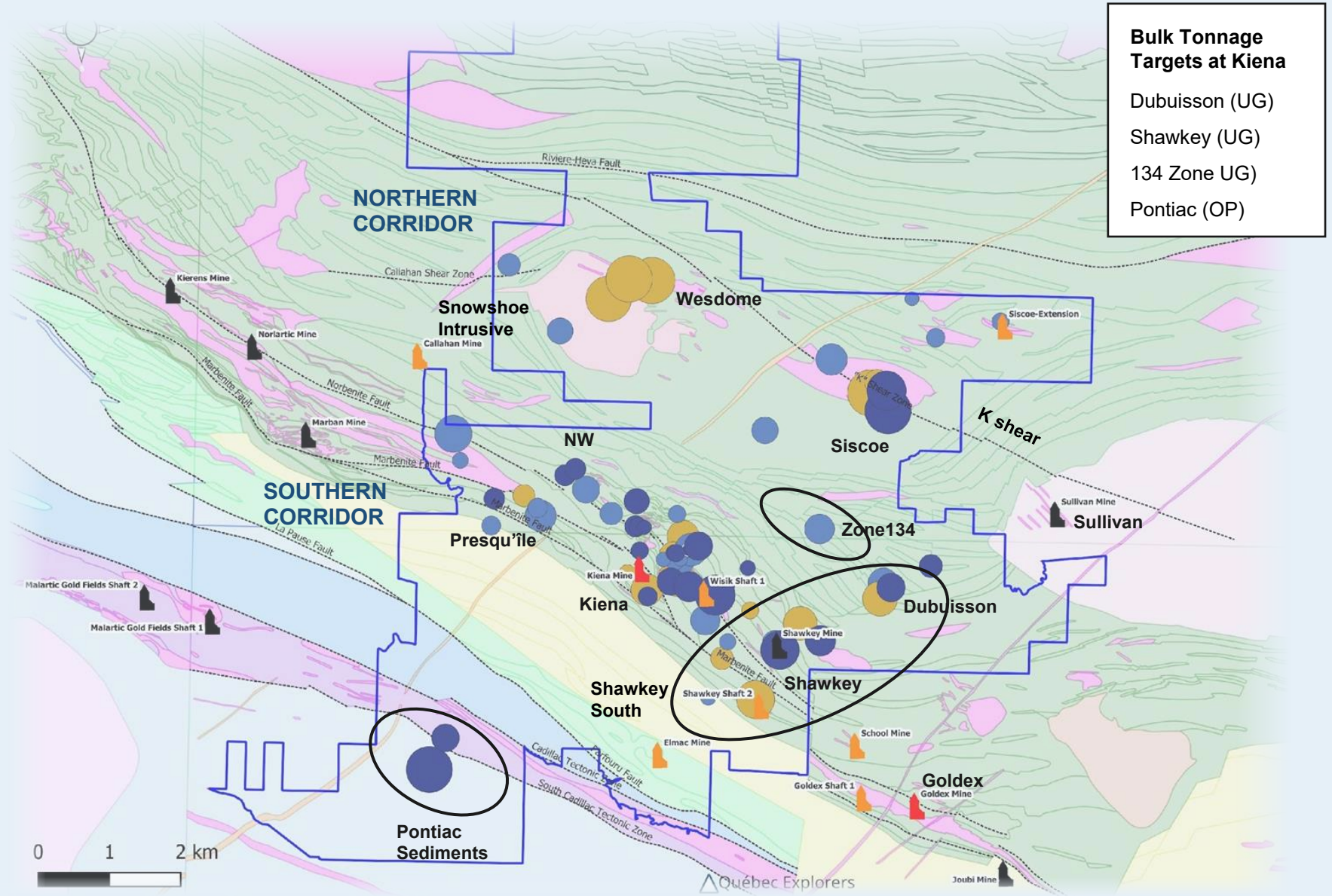
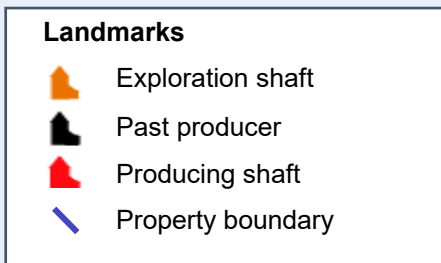
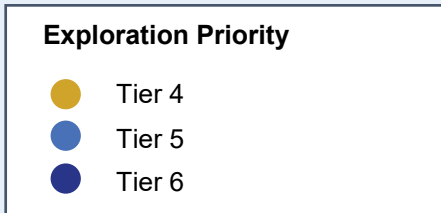
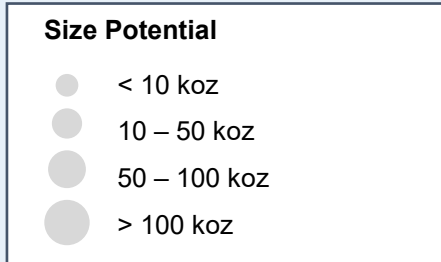
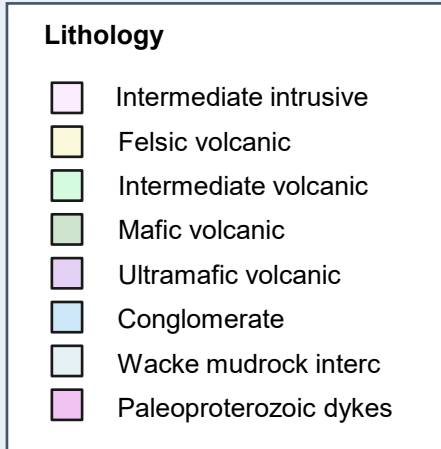
DB-25-068 from 409.3 – 452.0 m



Property-Wide Geophysics Highlights Multiple High-Priority Targets



Multiple Opportunities Across the Property to Develop Bulk Tonnage Targets



Bulk Tonnage Targets at Kiena

- Dubuisson (UG)
- Shawkey (UG)
- 134 Zone (UG)
- Pontiac (OP)

Unlocking Our Potential Through Exploration

High-Grade

- Growth through extensions of known zones

Global Model

- Potential to mine untapped material zones

Discoveries

- Successful track record of adding ounces through discoveries

Optionality

- Long-term open pit and bulk tonnage opportunities

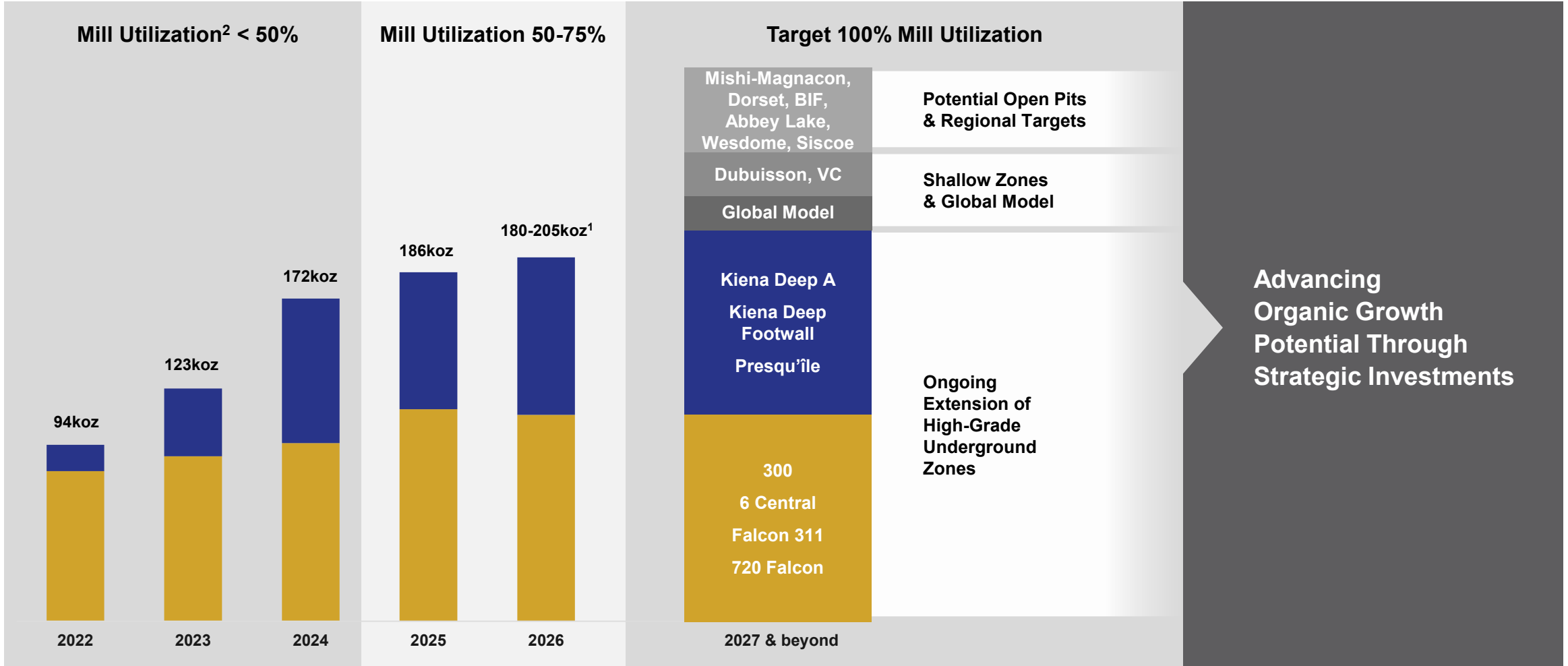


A man in a blue long-sleeved shirt and safety glasses is leaning over a metal rod, inspecting it with a handheld device. The background is a blurred industrial setting. The text "Building a Mid-Tier Gold Producer" is overlaid on the left side of the image.

Building a Mid-Tier Gold Producer

Daylighting Value and Optionality in Underexplored Land Packages

Illustrative Production Profile



■ Kiena ■ Eagle River

1. Production guidance for 2026 – see Company's press release dated January 20, 2026
 2. Mill utilization considers overall equipment effectiveness measured as utilization / available time



TSX: WDO | OTCQX: WDOFF

Investor Relations

Raj Gill

SVP, Corporate Development &
Investor Relations

Trish Moran

VP, Investor Relations

Phone: +1 (416) 564-4290

Email: trish.moran@wesdome.com

Careers

 @Wesdome Gold Mines

Corporate Head Office

220 Bay St, Suite 1200
Toronto, ON M5J 2W4

